

BUILDER / CONTRACTOR RESPONSIBILITIES

IT IS THE RESPONSIBILITY OF THE BUILDER/CONTRACTOR TO INSURE THAT ALL PROJECT PLANS AND SPECIFICATIONS COMPLY WITH THE APPLICABLE REQUIREMENTS OF ANY GOVERNING BUILDING AUTHORITIES. THE SUPPLYING OF SEALED ENGINEERING DATA AND DRAWINGS FOR THE METAL BUILDING SYSTEM DOES NOT IMPLY OR CONSTITUTE AN AGREEMENT THAT THE METAL BUILDING SYSTEM MANUFACTURER OR ITS DESIGN ENGINEER IS ACTING AS THE ENGINEER OF RECORD OR DESIGN PROFESSIONAL FOR A CONSTRUCTION PROJECT.

THE CONTRACTOR MUST SECURE ALL REQUIRED APPROVALS AND PERMITS FROM THE APPROPRIATE AGENCY AS REQUIRED. APPROVAL OF THE METAL BUILDING SYSTEM MANUFACTURER'S DRAWINGS AND CALCULATIONS INDICATE THAT THE METAL BUILDING SYSTEM MANUFACTURER CORRECTLY INTERPRETED AND APPLIED THE REQUIREMENTS OF THE CONTRACT DRAWINGS AND SPECIFICATIONS. (SECT. 4.2.1 AISC CODE OF STANDARD PRACTICES, 9TH ED.) WHERE DISCREPANCIES EXIST BETWEEN THE METAL BUILDING SYSTEM MANUFACTURER'S STRUCTURAL STEEL PLANS AND THE PLANS FOR OTHER TRADES, THE STRUCTURAL STEEL PLANS SHALL GOVERN. (SECT. 3.3 AISC CODE OF STANDARD PRACTICE 9TH ED.)

DESIGN CONSIDERATIONS OF ANY MATERIALS IN THE STRUCTURE WHICH ARE NOT FURNISHED BY THE METAL BUILDING SYSTEM MANUFACTURER ARE THE RESPONSIBILITY OF THE CONTRACTORS AND ENGINEERS OTHER THAN THE METAL BUILDING SYSTEM MANUFACTURER'S ENGINEER UNLESS SPECIFICALLY INDICATED.

THE CONTRACTOR IS RESPONSIBLE FOR ALL ERECTION OF STEEL AND ASSOCIATED WORK IN COMPLIANCE WITH THE METAL BUILDING SYSTEM MANUFACTURER "FOR CONSTRUCTION" DRAWINGS.

ALL BRACING AS SHOWN AND PROVIDED BY THE METAL BUILDING SYSTEM MANUFACTURER FOR THIS BUILDING IS REQUIRED AND SHALL BE INSTALLED BY THE ERECTOR AS A PERMANENT PART OF THE STRUCTURE.

TEMPORARY SUPPORTS, SUCH AS TEMPORARY GUYS, BRACES, FALSE WORK, CRIBBING OR OTHER ELEMENTS REQUIRED FOR THE ERECTION OPERATION WILL BE DETERMINED AND FURNISHED AND INSTALLED BY THE ERECTOR. THESE TEMPORARY SUPPORTS WILL SECURE THE STEEL FRAMING, OR ANY PARTLY ASSEMBLED STEEL FRAMING, AGAINST LOADS COMPARABLE IN INTENSITY TO THOSE FOR WHICH THE STRUCTURE WAS DESIGNED, RESULTING FROM WIND, SEISMIC FORCES AND ERECTION OPERATIONS, BUT NOT THE LOADS RESULTING FROM THE PERFORMANCE OF WORK BY OR THE ACTS OF OTHERS, NOR SUCH UNPREDICTABLE LOADS AS THOSE DUE TO TORNADO, EXPLOSION, OR COLLISION. (SECT. 7.9.1 AISC CODE OF STANDARD PRACTICE, 9TH ED.)

WARNING: IN NO CASE SHOULD GALVALUME STEEL PANELS BE USED IN CONJUNCTION WITH LEAD OR COPPER. BOTH LEAD AND COPPER HAVE HARMFUL CORROSION EFFECTS ON THE ALUMINUM ZINC ALLOY COATING WHEN THEY ARE USED IN CONTACT WITH GALVALUME STEEL PANELS. EVEN RUN-OFF FROM COPPER FLASHING, WIRING, OR TUBING ONTO GALVALUME SHOULD BE AVOIDED.

ROOF PANELS:

COLOR: _____ GALVALUME _____

WALL PANELS:

COLOR: _____ NEED TO DISCUSS _____

TRIM COLORS:

CABLE: _____ NEED TO DISCUSS _____

CORNER: _____ NEED TO DISCUSS _____

EAVE: _____ NEED TO DISCUSS _____

FRAMED OPENINGS: _____ NEED TO DISCUSS _____

LINER PANELS:

COLOR: _____ N/A _____

LINER TRIM:

COLOR: _____ N/A _____

BUILDING LOADS / DESCRIPTION:

WIDTH: 20 LENGTH: 30 HEIGHT: 9 / 9
(BUILDING DIMENSIONS ARE NOMINAL. REFER TO PLANS).

SITE CLASS: D

OCCUPANCY CATEGORY: II - Normal

THIS STRUCTURE IS DESIGNED UTILIZING THE LOADS INDICATED AND APPLIED AS REQUIRED BY : NBC 15

SEISMIC DESIGN CATEGORY: B

THE CONTRACTOR IS TO CONFIRM THAT THESE LOADS COMPLY WITH THE REQUIREMENTS OF THE LOCAL BUILDING DEPARTMENT.

ROOF DEAD LOAD: 3.00 PSF (ROOF PANELS & PURLINS)

COLLATERAL LOAD: 4.00 PSF SNOW EXPOSURE: 1.00

ROOF LIVE LOAD: 21.00 PSF WIND EXPOSURE: R3

ROOF SNOW LOAD: 30.10 PSF INTERNAL PRESSURE COEFF.: _____

GROUND SNOW LOAD: 27 PSF 0.00 / -0.15

BASIC WIND SPEED: 0 MPH SPECTRAL RESPONSE COEFF. _____ MAPPED SPECTRAL RESPONSE ACC. _____

SEISMIC ZONE: _____ F_a 1.24 S(0.2) 0.21

THERMAL FACTOR: _____ F_v 1.5500 S(0.5) 0.14

IMPORTANCE FACTORS: _____ DESIGN BASE SHEAR, V: _____ S(1.0) 0.0806

WIND LOAD _____ 1.00 EXPANDED FORMULA $S(T_a) \cdot M_v \cdot I_e \cdot W / (R_d \cdot R_o)$ S(2.0) 0.04082

SNOW LOAD _____ LONGITUDINAL 0.79 R_d _____

SEISMIC LOAD _____ 1.00 TRANSVERSE 0.92 R_o _____

GENERAL NOTES:

- MATERIALS : MINIMUM YIELD:
HOT ROLLED BAR Fy = 50.0000 ksi MIN.
STRUCTURAL STEEL SHEET Fy = 50.0000 ksi MIN.
STRUCTURAL STEEL PLATE Fy = 50.0000 ksi MIN.
COLD FORMED SHAPES Fy = 55.0000 ksi MIN.
WALL SHEETING Fy = 50.0000 ksi MIN.
ROOF SHEETING Fy = 50.0000 ksi MIN.
BOLTS A307 & A325
THE METAL BUILDING MANUFACTURER RESERVES THE RIGHT TO SUBSTITUTE THE ABOVE MATERIALS WITH EQUAL OR BETTER MATERIAL.

- BOLT TIGHTENING REQUIREMENTS:
ALL HIGH STRENGTH BOLTS ARE A325 UNLESS NOTED OTHERWISE. HIGH STRENGTH BOLTS SHALL BE TIGHTENED BY THE TURN OF THE NUT METHOD IN ACCORDANCE WITH THE LATEST EDITION AISC "SPECIFICATION FOR STRUCTURAL JOINTS USING ASTM A325 OR A490 BOLTS". A325 BOLTS SHALL BE INSTALLED WITH OUT WASHERS WHEN TIGHTENED BY THE "TURN OF THE NUT" METHOD. ALL BOLTED CONNECTIONS, FOR SHEAR/BEARING CONNECTION TYPE WITH BOLT THREADS EXCLUDED FROM THE SHEAR PLANE SHALL BE SNUG TIGHT ONLY.

- ALL STRUCTUAL STEEL TO RECEIVE A RUST INHIBITIVE PRIMER. THIS PAINT IS NOT INTENDED FOR LONG TERM EXPOSURE TO THE ELEMENTS.



IMPORTANT NOTE: FINAL DETAILING, FABRICATION, AND DELIVERY DATE OF THIS PROJECT CANNOT BE COMPLETED UNTIL THE SIGNED APPROVALS ARE RETURNED TO THE METAL BUILDING MANUFACTURER.

REV.	DATE	REVISION
01	15/08/2024	ISSUE FOR CONSTRUCTION
00	14/08/2024	ISSUE FOR APPROVAL

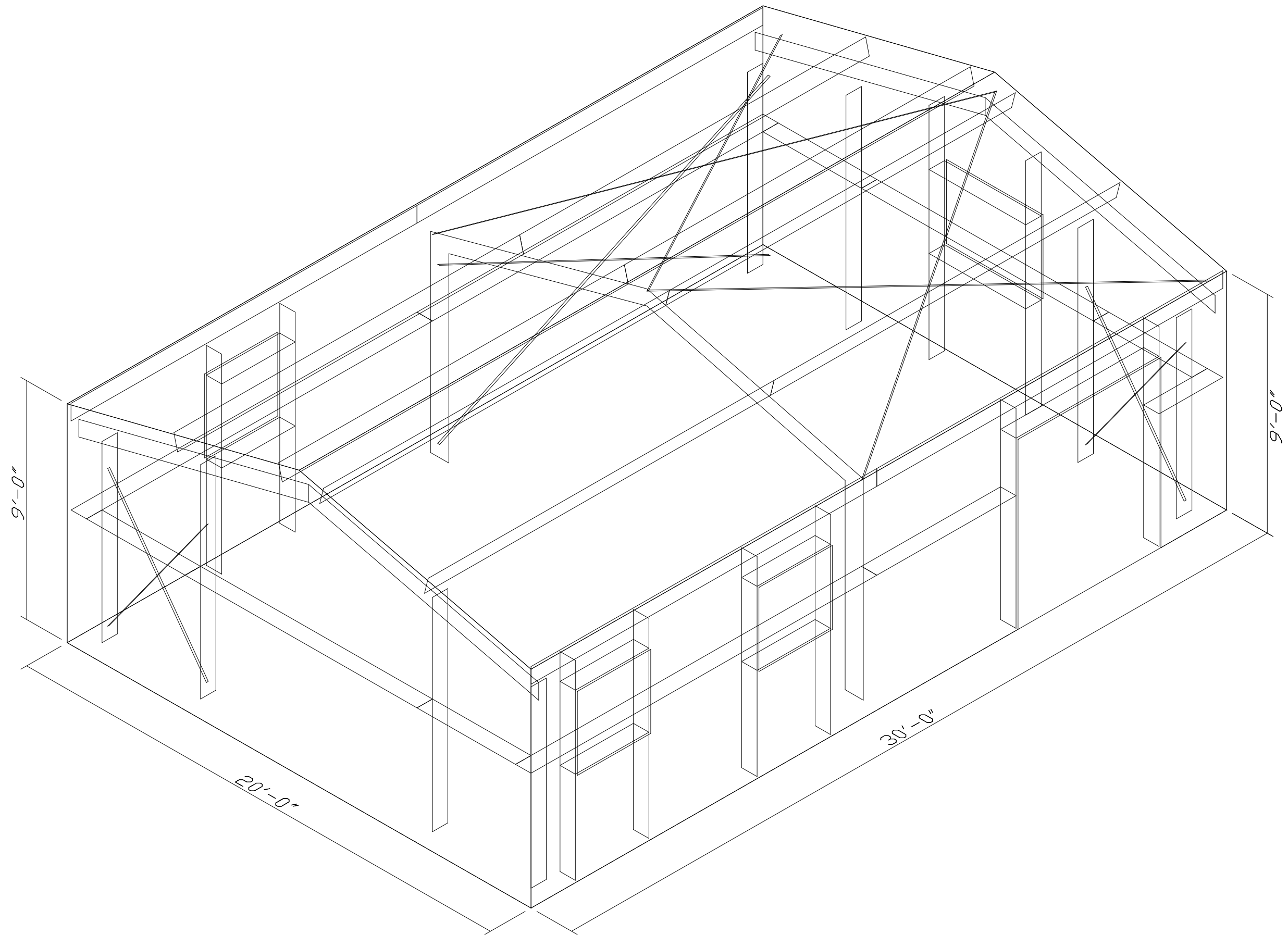
PURCHASER:	
PROJECT:	20x30x9
JOB NUMBER:	24-4763

DEFLECTION LIMITS:

EW COL:	180
EW RAF LIVE:	180
EW RAF WIND:	180
WALL GIRT:	90
PURL LIVE:	180
PURL WIND:	120
WALL PANEL:	90
ROOF PANEL LIVE:	180
ROOF PANEL WIND:	120
RF HORIZONTAL:	60
RF VERTICAL:	180
WIND BENT:	60
RF CRANE:	100
RF SEIS:	40
WIND BENT SEIS:	40

APPROVAL NOTES

THE FOLLOWING CONDITIONS APPLY IN THE EVENT THAT THESE DRAWINGS ARE USED AS APPROVAL DRAWINGS: IT IS IMPERATIVE THAT ANY CHANGES TO THESE DRAWINGS BE MADE IN CONTRASTING INK (PREFERABLY RED INK), HAVE ALL INSTANCES OF CHANGE CLEARLY INDICATED, AND BE LEGIBLE AND UNAMBIGUOUS. A SIGNATURE AND DATE IS REQUIRED ON ALL PAGES. MANUFACTURER RESERVES THE RIGHT TO RE-SUBMIT DRAWINGS WITH EXTENSIVE OR COMPLEX CHANGES REQUIRED TO AVOID MISFABRICATION. THIS MAY IMPACT THE DELIVERY SCHEDULE. APPROVAL OF THESE DRAWINGS INDICATES CONCLUSIVELY THAT THE METAL BUILDING SYSTEM MANUFACTURER HAS CORRECTLY INTERPRETED THE CONTRACT REQUIREMENTS, AND FURTHER CONSTITUTES AGREEMENT THAT THE BUILDING AS DRAWN WITH INDICATED CHANGES REPRESENTS THE TOTAL OF THE MATERIALS TO BE SUPPLIED BY MANUFACTURER. ANY CHANGES NOTED ON THE DRAWINGS NOT IN COMFORMANCE WITH THE TERMS AND REQUIREMENTS OF THE CONTRACT BETWEEN MANUFACTURER AND ITS CUSTOMER ARE NOT BINDING ON MANUFACTURER UNLESS SUBSEQUENTLY SPECIFICALLY ACKNOWLEDGED AND AGREED TO IN WRITING BY CHANGE ORDER OR SEPARATE DOCUMENTATION. MANUFACTURER RECONGNIZES THAT RUBBER STAMPS ARE ROUTINELY USED FOR INDICATING APPROVAL, DISAPPROVAL, REJECTION, OR MERE REVIEW OF THE DRAWINGS SUBMITTED. HOWEVER, MANUFACTURER DOES NOT ACCEPT CHANGES OR ADDITIONS TO CONTRACTUAL TERMS AND CONDITIONS THAT MAY APPEAR WITH USE OF A STAMP OR SIMILIAR INDICATIOIN OF APPROVAL, DISAPPROVAL, ETC. SUCH LANGUAGE APPLIED TO MANUFACTURER'S DRAWINGS BY THE CUSTOMER, ARCHITECT, ENGINEER, OR ANY OTHER PARTY WILL BE CONSIDERED AS UNACCEPTABLE ALTERNATIONS TO THESE DRAWING NOTES, AND WILL NOT ALTER THE CONTRACTUAL RIGHTS AND OBLIGATIONS EXISTING BETWEEN MANUFACTURER AND ITS CUSTOMER.



15 Aug 2024

NOTES FOR REACTIONS

- All loading conditions are examined and only maximum/minimum H or V and the corresponding H or V are reported.
- Positive reactions are as shown in the sketch. Foundation loads are in opposite directions.
- Bracing reactions are in the plane of the brace with the H pointing away from the braced bay. The vertical reaction is downward.
- Building reactions are based on the following building data:
 - Width (ft) = 20.0
 - Length (ft) = 30.0
 - Eave Height (ft) = 9.0 / 9.0
 - Roof Slope (rise/12) = 3.00 / 3.00
 - Roof Dead Load (psf) = 3.0
 - Wall Dead Load (psf) = 2.0
 - Left Endwall (psf) = 2.0
 - Right Endwall (psf) = 2.0
 - Front Sidewall (psf) = 2.0
 - Back Sidewall (psf) = 2.0
 - Live Load (psf) = 21.0
 - Collateral Load (psf) = 4.0
 - Snow Load (psf) = 30.1
 - Wind Load 1:50 (psf) = 9.2
 - Wind Code = ONBC 19 (NBC 15)
 - Wind Category = 1
 - Exposure = R3
 - Internal Wind Coeff = -0.15, +0.00
 - Importance Wind (ULS) = 1.00
 - Importance Seismic (ULS) = 1.00
 - Seismic Category = B
 - Seismic Data:
 - Sa (0.2) = 0.1680
 - Sa (0.5) = 0.0960
 - Sa (1.0) = 0.0520
 - Sa (2.0) = 0.0260
 - Sa (5.0) = 0.0064
 - Sa (10.0) = 0.0025
 - PGA (2.0) = 0.1060
 - S (2.0) = 0.0408
 - S (0.5) = 0.1411

5. Loading conditions are:

- 1.25Dead+1.25Collateral+1.5Snow+1.5Snow_Drift+1.5Slide_Snow
- 1.25Dead+1.25Collateral+1.5Snow+0.4Wind_Left1+1.5Snow_Drift+1.5Slide_Snow
- 1.25Dead+1.25Collateral+1.5Snow+0.4Wind_Right1+1.5Snow_Drift+1.5Slide_Snow
- 0.9Dead+1.4Wind_Right1
- 0.9Dead+1.4Wind_Left2
- 0.9Dead+1.4Wind_Right2
- 0.9Dead+1.4Wind_Long1L
- 0.9Dead+1.4Wind_Left1+1.4Wind_Suction
- 0.9Dead+1.4Wind_Left1+1.4Wind_Pressure
- 1.25Dead+1.25Collateral+Snow/2+1.4Wind_Right2+1.4Wind_Pressure+Snow_Drift/2+Slide_Snow/2
- 0.9Dead+1.4Wind_Right1+1.4Wind_Suction
- 0.9Dead+1.4Wind_Right1+1.4Wind_Pressure
- 1.25Dead+1.25Collateral+1.5Snow+0.4Wind_Left2+0.4Wind_Pressure+1.5Snow_Drift+1.5Slide_Snow/2
- 0.9Dead+1.4Wind_Suction+1.4Wind_Long2L
- 0.9Dead+1.4Wind_Pressure+1.4Wind_Long2L
- 1.25Dead+1.25Collateral+1.5E1UNB_SL_R
- 1.25Dead+1.25Collateral+Snow/2+1.4Wind_Right2+1.4Wind_Suction+Snow_Drift/2+Slide_Snow/2
- 1.25Dead+1.25Collateral+Snow/2+1.4Wind_Suction+Snow_Drift/2+Slide_Snow/2

ENDWALL COLUMN: BASIC COLUMN REACTIONS (k)

Frm Line	Col Line	Dead Vert	Collat Vert	Live Vert	Snow Vert	Wind_Left1 Horz	Wind_Left1 Vert	Wind_Right1 Horz	Wind_Right1 Vert	Wind_Left2 Horz	Wind_Left2 Vert	Wind_Right2 Horz	Wind_Right2 Vert	Wind Press Horz
1	A	0.1	0.0	0.2	0.2	-0.5	-1.2	0.0	1.1	-0.5	-1.1	0.0	1.1	-0.1
1	B	0.3	0.3	1.5	2.2	0.0	0.0	0.5	-1.8	0.0	0.2	0.5	-1.7	-0.2
1	C	0.3	0.3	1.5	2.2	0.0	-0.6	0.0	-1.1	0.0	-0.5	0.0	-0.9	-0.2
1	D	0.1	0.0	0.2	0.2	0.0	-0.2	0.0	-0.1	0.0	-0.1	0.0	0.0	-0.1

Frm Line	Col Line	Wind Suct Horz	Wind_Long1 Horz	Wind_Long2 Horz	Seis_Left Horz	Seis_Right Horz	Seis_Long Vert	E1UNB_SL_L- Horz	E1UNB_SL_L- Vert
1	A	0.1	0.0	0.1	-0.1	-0.4	-0.2	-0.5	0.0
1	B	0.1	0.1	-1.2	0.0	-0.2	0.0	0.5	0.0
1	C	0.1	0.0	-0.5	0.0	-0.8	0.0	0.0	0.0
1	D	0.1	0.0	-0.1	0.0	-0.3	0.0	0.0	0.1

Frm Line	Col Line	E1UNB_SL_R- Horz	E1UNB_SL_R- Vert
1	A	0.0	0.1
1	B	0.0	1.3
1	C	0.0	2.0
1	D	0.0	0.3

Frm Line	Col Line	Dead Vert	Collat Vert	Live Vert	Snow Vert	Wind_Left1 Horz	Wind_Left1 Vert	Wind_Right1 Horz	Wind_Right1 Vert	Wind_Left2 Horz	Wind_Left2 Vert	Wind_Right2 Horz	Wind_Right2 Vert
3	D	0.1	0.0	0.2	0.2	-0.5	-1.2	0.0	1.1	-0.5	-1.1	0.0	1.1
3	C	0.3	0.3	1.5	2.2	0.0	0.0	0.5	-1.8	0.0	0.2	0.5	-1.7
3	B	0.3	0.3	1.5	2.2	0.0	-0.6	0.0	-1.1	0.0	-0.5	0.0	-0.9
3	A	0.1	0.0	0.2	0.2	0.0	-0.2	0.0	-0.1	0.0	-0.1	0.0	0.0

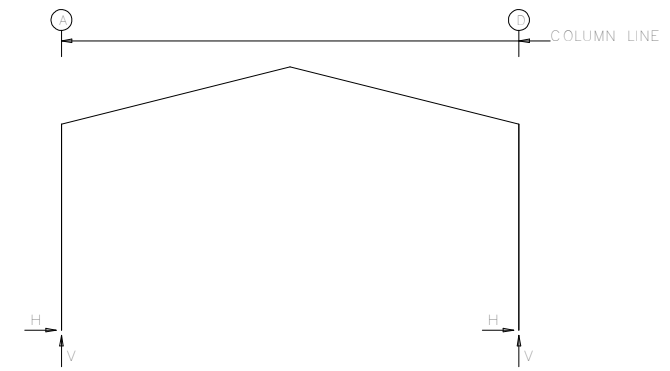
Frm Line	Col Line	Wind_Press Horz	Wind_Suct Vert	Wind_Long1 Horz	Wind_Long2 Horz	Seis_Left Horz	Seis_Right Horz	Seis_Long Horz	Seis_Long Vert						
3	D	-0.7	-1.4	0.1	1.6	0.0	0.1	-0.1	-0.4	-0.2	-0.5	0.0	0.5	-0.5	-1.1
3	C	-0.2	1.2	0.7	-1.4	0.1	-1.2	0.0	-0.2	0.0	0.5	0.2	-0.5	0.0	1.1
3	B	-0.2	0.2	0.1	-0.2	0.0	-0.5	0.0	-0.8	0.0	0.0	0.0	0.0	0.0	0.1
3	A	-1.2	-0.6	0.1	0.6	0.0	-0.1	0.0	-0.3	0.0	0.0	0.0	0.0	-0.8	-0.4

Frm Line	Col Line	E2UNB_SL_L- Horz	E2UNB_SL_L- Vert	E2UNB_SL_R- Horz	E2UNB_SL_R- Vert
3	D	0.0	0.3	0.0	0.1
3	C	0.0	2.0	0.0	1.3
3	B	0.0	1.3	0.0	2.0
3	A	0.0	0.1	0.0	0.3

ENDWALL COLUMN: MAXIMUM REACTIONS, ANCHOR BOLTS, & BASE PLATES

Frm Line	Col Line	Load Id	Hmax H	V Vmax	Load Id	Hmin H	V Vmin	Bolt Qty	Base_Plate Dia	Width	Length	Thick	Grout (in)
1	A	8	0.1	-1.6	9	-0.1	-1.6	2	0.625	3.000	8.000	0.250	0.0
1	A	10	-0.1	1.8									
1	C	11	0.2	-2.2	12	-0.3	-2.2	2	0.625	3.000	8.000	0.250	0.0
1	C	13	-0.1	4.1									
1	D	14	0.1	-0.3	15	-0.1	-0.3	2	0.625	3.000	8.000	0.250	0.0
1	D	16	0.0	0.6									
3	D	8	0.1	0.4	9	-0.1	-3.5	2	0.625	3.000	8.000	0.250	0.0
3	D	17	0.1	4.0									
3	C	11	0.2	-4.2	12	-0.3	-0.3	2	0.625	3.000	8.000	0.250	0.0
3	C	13	-0.1	4.6	11	0.2	-4.2						
3	B	11	0.2	-1.4	12	-0.3	-0.9	2	0.625	3.000	8.000	0.250	0.0
3	B	1	0.0	4.1	11	0.2	-1.4						
3	A	14	0.1	0.4	15	-1.7	-1.1	2	0.625	3.000	8.000	0.250	0.0
3	A	18	0.1	1.0									

FRAME LINES: 2



RIGID FRAME: MAXIMUM REACTIONS, ANCHOR BOLTS, & BASE PLATES

Frm Line	Col Line	Load Id	Hmax H	V Vmax	Load Id	Hmin H	V Vmin	Bolt Qty	Base_Plate Dia	Width	Length	Thick	Grout (in)
2	A	3	3.0	10.0	5	-1.8	-1.6	4	0.625	6.000	10.25	0.375	0.0
2	A	1	2.8	10.4	7	0.0	-2.6						
2	D	6	1.8	-1.6	2	-3.0	10.0	4	0.625	6.000	10.25	0.375	0.0
2	D	1	-2.8	10.4	4	1.7	-2.2						

RIGID FRAME: BASIC COLUMN REACTIONS (k)

Frame Line	Column Line	Dead Horz	Dead Vert	Collateral Horz	Collateral Vert	Live Horz	Live Vert	Snow Horz	Snow Vert	Wind_Left1 Horz	Wind_Left1 Vert	Wind_Right1 Horz	Wind_Right1 Vert
2	A	0.2	0.8	0.2	0.8	1.1	3.9	1.5	5.6	1.3	-2.0	0.5	-0.9
2	D	-0.2	0.8	-0.2	0.8	-1.1	3.9	-1.5	5.6	-0.5	-0.9	1.3	-2.0

Frame Line	Column Line	Wind_Left2 Horz	Wind_Left2 Vert	Wind_Right2 Horz	Wind_Right2 Vert	Wind_Long1 Horz	Wind_Long1 Vert	Wind_Long2 Horz	Wind_Long2 Vert	Seismic_Left Horz	Seismic_Left Vert	Seismic_Right Horz	Seismic_Right Vert
2	A	-1.4	-1.6	0.4	-0.5	-0.1	-2.4	0.4	-1.5	-0.2	-0.2	0.2	0.2
2	D	-0.4	-0.5	1.4	-1.6	-0.4	-0.9	0.1	-1.8	-0.2	0.2	0.2	-0.2

Frame Line	Column Line	Seismic_Long Horz	Seismic_Long Vert	F1UNB_SL_L- Horz	F1UNB_SL_L- Vert	F1UNB_SL_R- Horz	F1UNB_SL_R- Vert
2	A	-0.3	-0.6	1.1	5.0	1.1	3.5
2	D	-0.3	0.2	-1.1	3.5	-1.1	3.5

ANCHOR BOLT SUMMARY

Qty	Locate	Dia (in)	Type	Total Len (in)	Bend Len (in)	Proj (in)
4	Jamb	1/2"	A307	3.75		1.50
16	Endwall	5/8"	A307			2.50
8	Frame	5/8"	A307		3.00	2.50

BUILDING BRACING REACTIONS

Loc	Wall Line	Col Line	± Reactions(k)	Panel Shear (lb/ft)		
			Wind Horz	Seismic Horz	Wind Vert	Seismic Vert
L_EW	1	A,B	0.5	1.1	0.2	0.5
F_SW	D	Torsional	Bracing Used			
R_EW	3	D,C	1.2	2.4	0.5	1.1
B_SW	A	3,2	1.1	0.5	0.8	0.4

Reactions for seismic represent shear force, V
Reaction values shown are unfactored

DRAWING STATUS:

- FOR CONSTRUCTION
FINAL DRAWINGS USED FOR ERECTION PURPOSES
- FOR APPROVAL / PERMIT
NOT TO BE USED FOR ERECTION PURPOSES
- PRELIMINARY ONLY
ISSUED FOR CONFIRMATION OF SCOPE ONLY



DESCRIPTION: ANCHOR BOLT REACTIONS

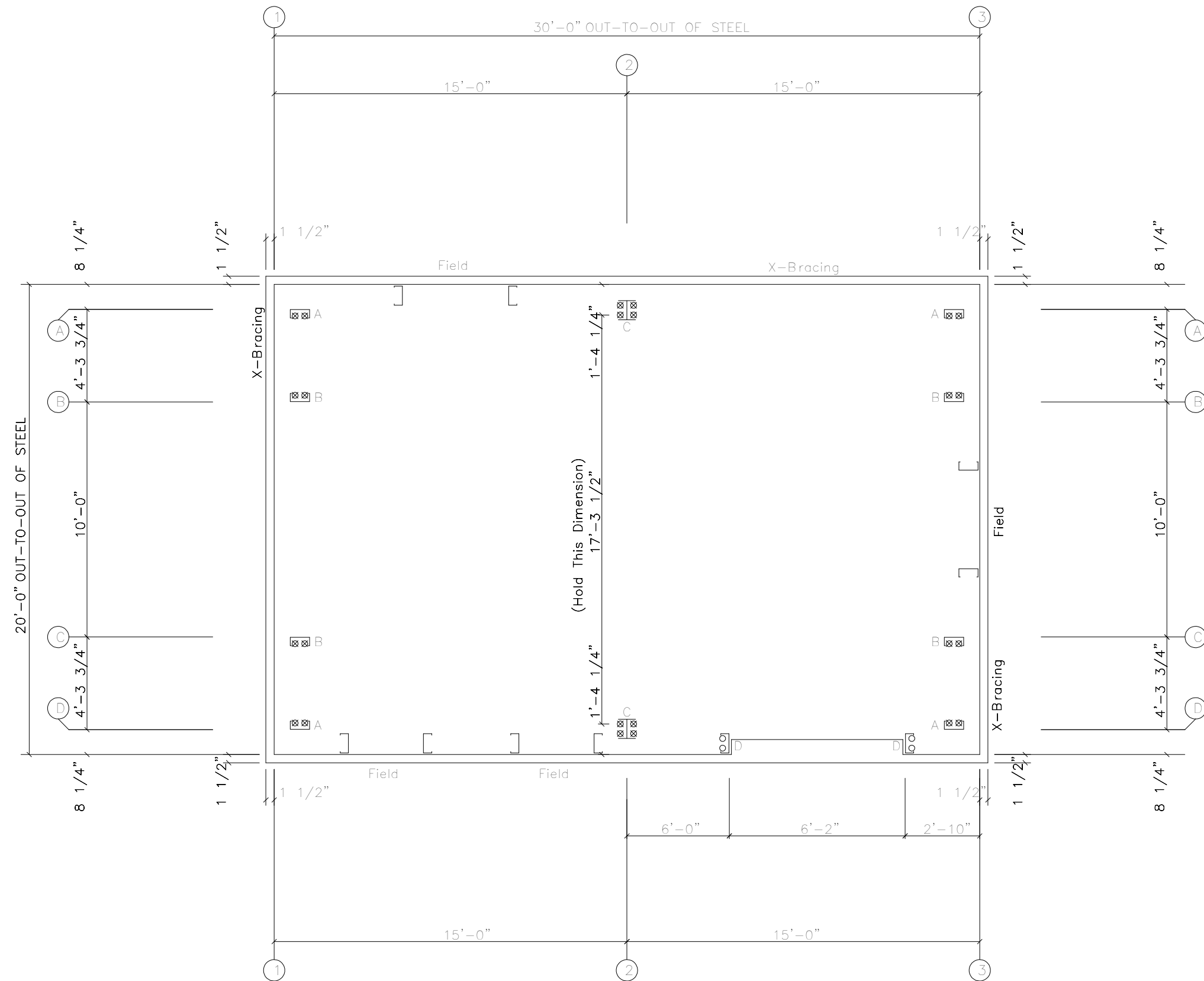
CUSTOMER: PROJECT: 20x30x9

LOCATION: Brampton, ON. L6S 1W8

DRN. BY	CK'D BY	DATE	SCALE	REV.	QUOTATION NO.	SHEET NO.
KN	PT		N.T.S.	01	24-4763	OF

○ Dia= 1/2"

⊗ Dia= 5/8"



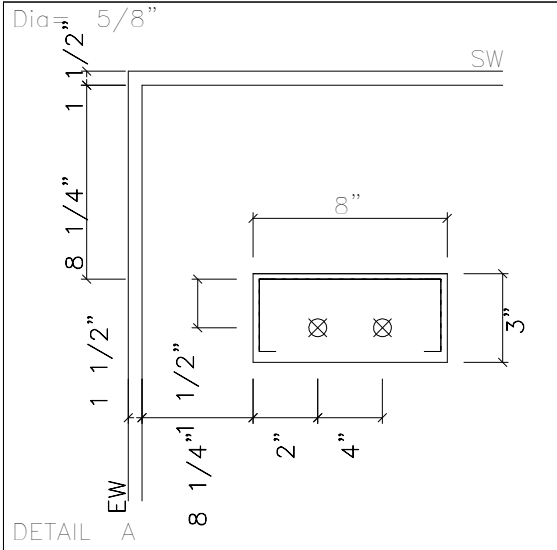
ANCHOR BOLT PLAN
 NOTE: All Base Plates @ 100'-0" (U.N.)



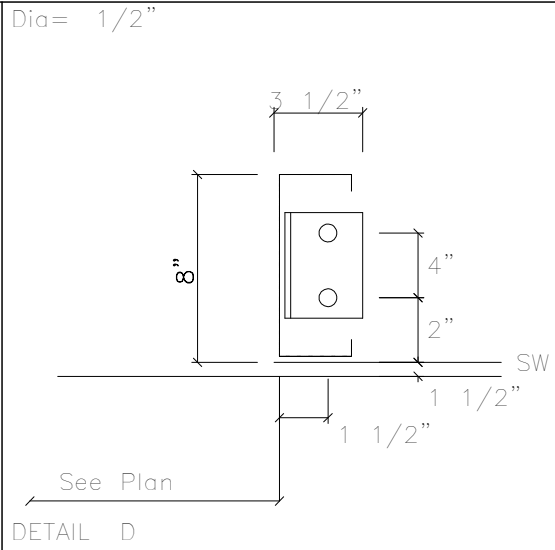
DRAWING STATUS:

<input type="checkbox"/>	FOR CONSTRUCTION FINAL DRAWINGS USED FOR ERECTION PURPOSES
<input type="checkbox"/>	FOR APPROVAL / PERMIT NOT TO BE USED FOR ERECTION PURPOSES
<input type="checkbox"/>	PRELIMINARY ONLY ISSUED FOR CONFIRMATION OF SCOPE ONLY

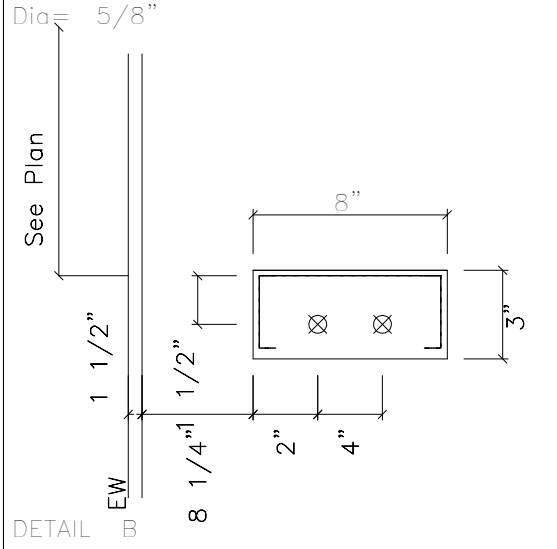
DESCRIPTION: ANCHOR BOLT PLAN						
CUSTOMER:				PROJECT: 20x30x9		
LOCATION: Brampton, ON. L6S 1W8						
DRN. BY	CK'D BY	DATE	SCALE	REV.	QUOTATION NO.	SHEET NO.
KN	PT		N.T.S.	01	24-4763	OF



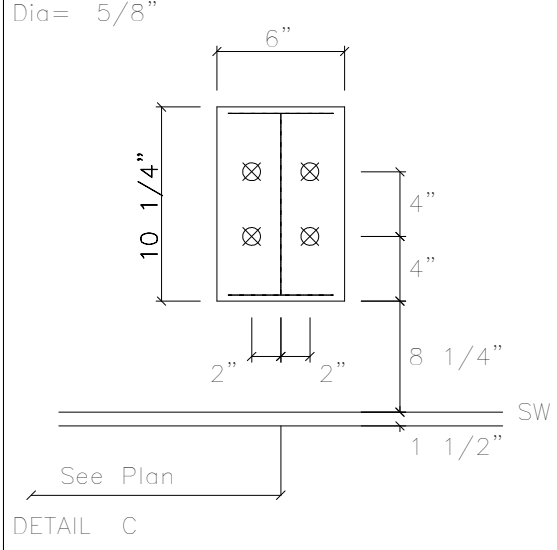
DETAIL A



DETAIL D



DETAIL B



DETAIL C

DRAWING STATUS:

- FOR CONSTRUCTION
FINAL DRAWINGS USED FOR ERECTION PURPOSES
- FOR APPROVAL / PERMIT
NOT TO BE USED FOR ERECTION PURPOSES
- PRELIMINARY ONLY
ISSUED FOR CONFIRMATION OF SCOPE ONLY

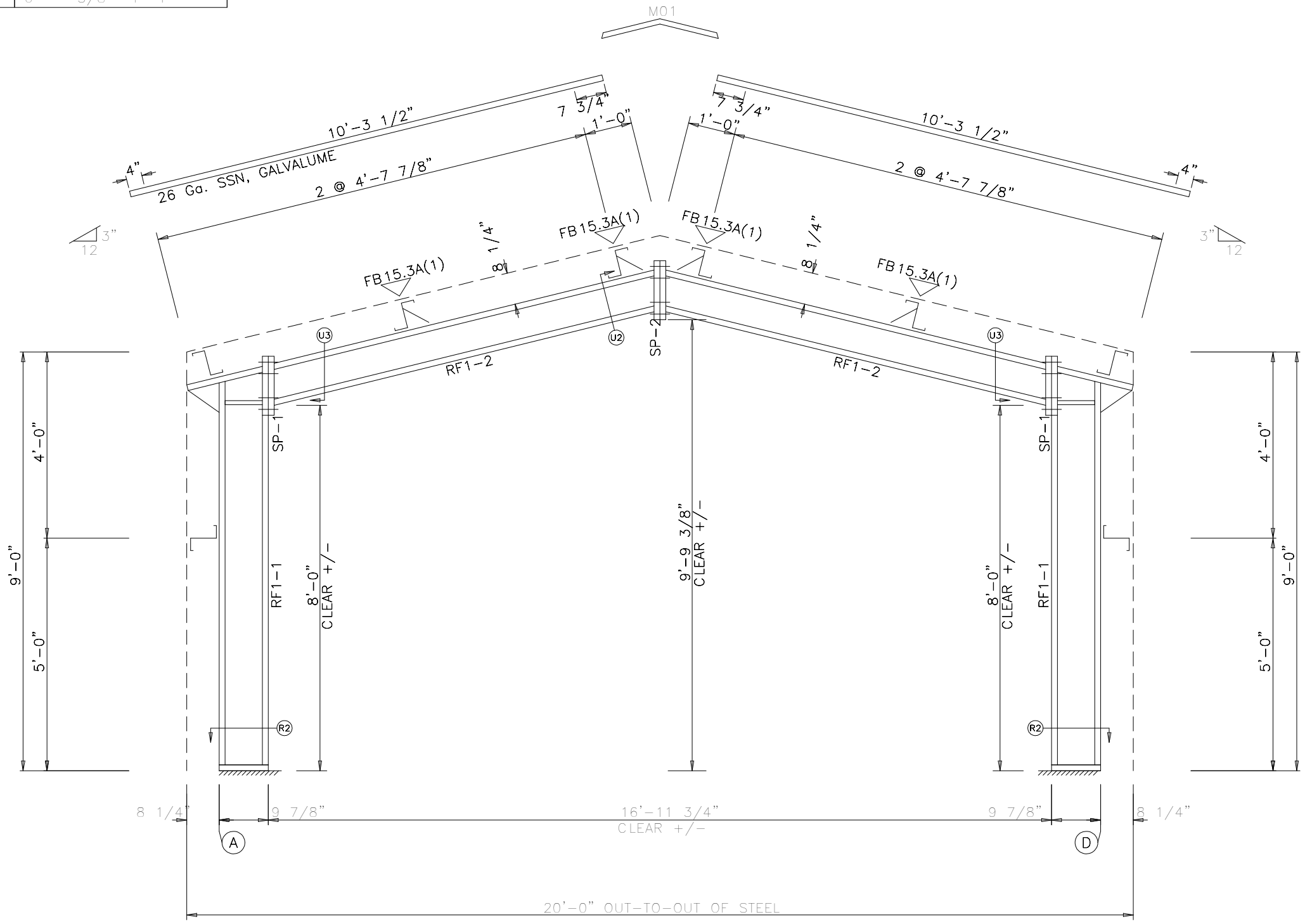


DESCRIPTION: ANCHOR BOLT DETAILS						
CUSTOMER:				PROJECT: 20x30x9		
LOCATION: Brampton, ON. L6S 1W8						
DRN. BY	CK'D BY	DATE	SCALE	REV.	QUOTATION NO.	SHEET NO.
KN	PT		N.T.S.	01	24-4763	OF

SPLICE PLATE & BOLT TABLE									
Mark	Qty		Int	Type	Dia	Length	Width	Thick	Length
	Top	Bot							
SP-1	4	4	0	A325	0.750	2.00	6"	1/2"	1'-4"
SP-2	4	4	0	A325	0.750	2.00	6"	3/8"	1'-4"

MEMBER SIZE TABLE			
MARK	MEMBER	LENGTH	WEIGHT
RF1-1	W10X12	8'-5 9/16"	136
RF1-2	W8X10	8'-9"	118

FLANGE BRACES: Both Sides(U.N.)
 FBxxA(1): xx=length(in)
 A - FB 15X1/8



RIGID FRAME ELEVATION: FRAME LINE 2

DRAWING STATUS:	
<input type="checkbox"/>	FOR CONSTRUCTION <small>FINAL DRAWINGS USED FOR ERECTION PURPOSES</small>
<input type="checkbox"/>	FOR APPROVAL / PERMIT <small>NOT TO BE USED FOR ERECTION PURPOSES</small>
<input type="checkbox"/>	PRELIMINARY ONLY <small>ISSUED FOR CONFIRMATION OF SCOPE ONLY</small>



DESCRIPTION: RIGID FRAME ELEVATION						
CUSTOMER:				PROJECT: 20x30x9		
LOCATION: Brampton, ON. L6S 1W8						
DRN. BY	CK'D BY	DATE	SCALE	REV.	QUOTATION NO.	SHEET NO.
KN	PT		N.T.S.	01	24-4763	OF

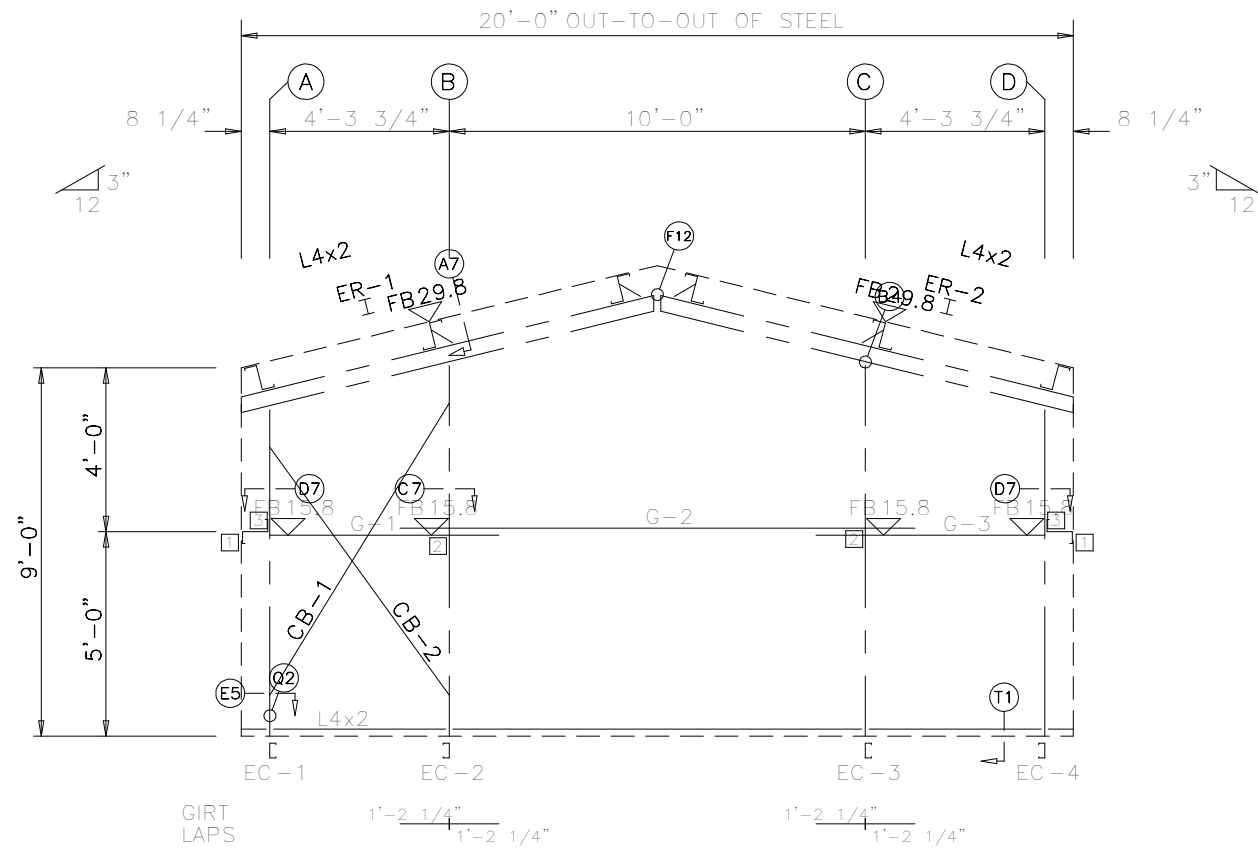
BOLT TABLE FRAME LINE 1				
LOCATION	QUAN	TYPE	DIA	LENGTH
ER-1/ER-2	8	A325	5/8"	1 3/4"
Columns/Raf	2	A325	5/8"	1 1/2"

MEMBER TABLE FRAME LINE 1		
MARK	PART	LENGTH
EC-1	8C16	7'-7 7/16"
EC-2	8C16	8'-8 3/8"
EC-3	8C16	8'-8 3/8"
EC-4	8C16	7'-7 7/16"
ER-1	W8X10	10'-3 7/16"
ER-2	W8X10	10'-3 7/16"
G-1	8Z14	5'-6"
G-2	8Z14	12'-4 1/2"
G-3	8Z14	5'-6"
CB-1	CB0375	8'-11 1/4"
CB-2	CB0375	8'-0 1/2"

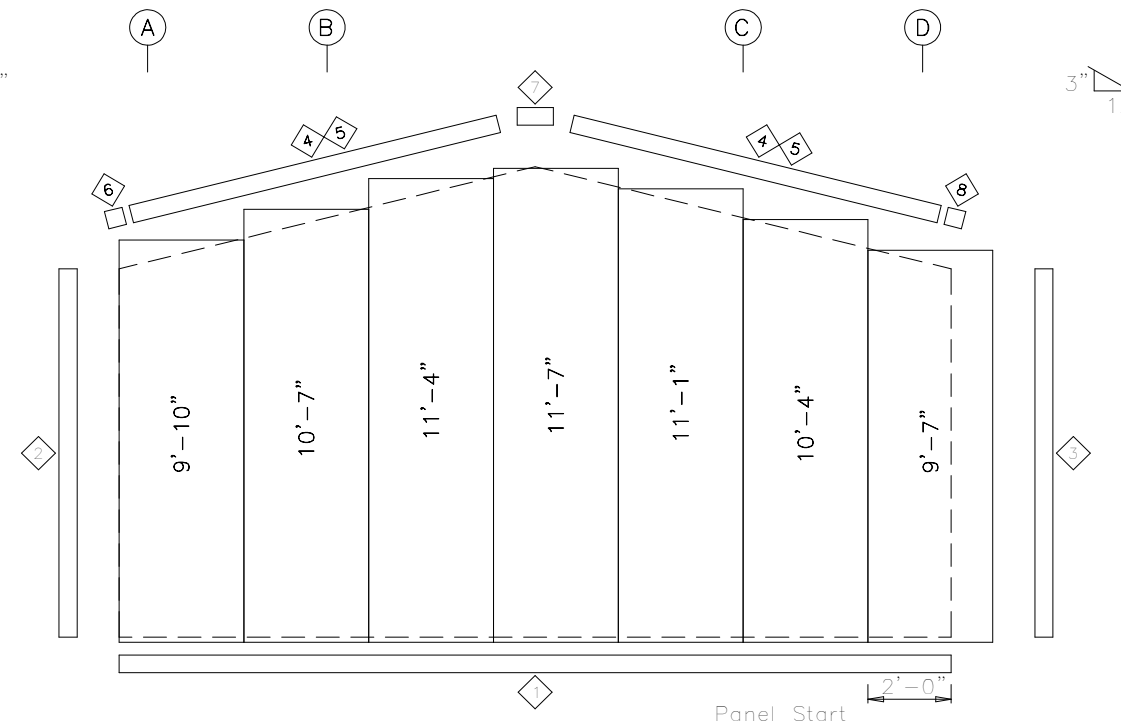
TRIM TABLE FRAME LINE 1		
ID	PART	LENGTH
1	M04	20'-2"
2	M128	20'-2"
3	M128	SCRAP
4	M03	20'-2"
5	M104	20'-2"
6	M62	1'-2 1/2"
7	M54	1'-2 1/2"
8	M61	1'-2 1/2"

FLANGE BRACE TABLE FRAME LINE 1		
ID	MARK	LENGTH
1	FB29.8	2'-5 3/4"
2	FB15.8	1'-3 3/4"

CONNECTION PLATES FRAME LINE 1	
ID	MARK/PART
1	d1
2	d2
3	r1



ENDWALL FRAMING: FRAME LINE 1



ENDWALL SHEETING & TRIM: FRAME LINE 1

PANELS: 26 Ga. SSN - NEED TO DISCUSS 0

DRAWING STATUS:	
<input type="checkbox"/>	FOR CONSTRUCTION <small>FINAL DRAWINGS USED FOR ERECTION PURPOSES</small>
<input type="checkbox"/>	FOR APPROVAL / PERMIT <small>NOT TO BE USED FOR ERECTION PURPOSES</small>
<input type="checkbox"/>	PRELIMINARY ONLY <small>ISSUED FOR CONFIRMATION OF SCOPE ONLY</small>



DESCRIPTION:		ENDWALL FRAMING					
CUSTOMER:				PROJECT: 20x30x9			
LOCATION: Brampton, ON. L6S 1W8							
DRN. BY	CK'D BY	DATE	SCALE	REV.	QUOTATION NO.	SHEET NO.	
KN	PT		N.T.S.	01	24-4763	OF	

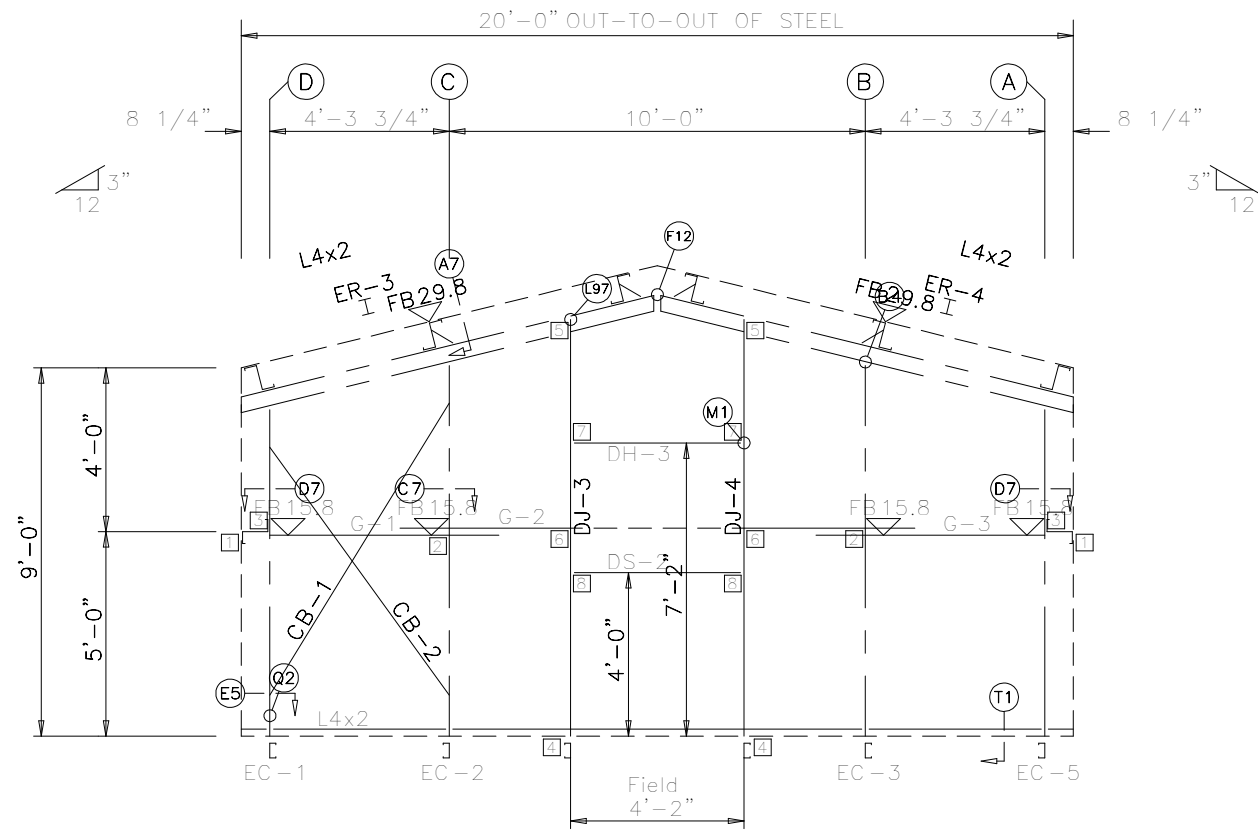
BOLT TABLE FRAME LINE 3				
LOCATION	QUAN	TYPE	DIA	LENGTH
ER-3/ER-4	8	A325	5/8"	1 3/4"
Columns/Raf	2	A325	5/8"	1 1/2"
Jamb	4	A325	1/2"	1 1/4"

MEMBER TABLE FRAME LINE 3		
MARK	PART	LENGTH
EC-1	8C16	7'-7 7/16"
EC-2	8C16	8'-8 3/8"
EC-3	8C16	8'-8 3/8"
EC-5	8C16	7'-7 7/16"
ER-3	W8X10	10'-3 7/16"
ER-4	W8X10	10'-3 7/16"
DJ-3	8C16	10'-1 3/4"
DJ-4	8C16	10'-1 3/4"
DH-3	8C16	4'-1 1/2"
DS-2	8C16	4'-1 1/2"
G-1	8Z14	5'-6"
G-2	8Z14	12'-4 1/2"
G-3	8Z14	5'-6"
CB-1	CB0375	8'-11 1/4"
CB-2	CB0375	8'-0 1/2"

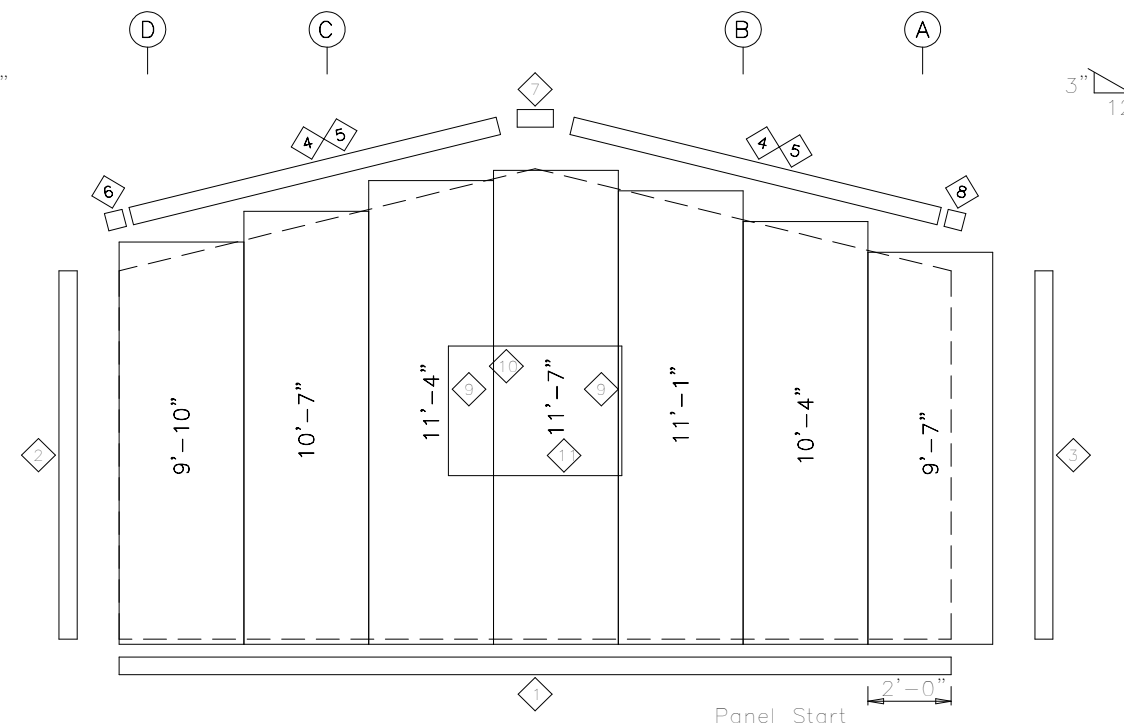
TRIM TABLE FRAME LINE 3		
ID	PART	LENGTH
1	M04	20'-2"
2	M128	20'-2"
3	M128	SCRAP
4	M03	20'-2"
5	M104	20'-2"
6	M62	1'-2 1/2"
7	M54	1'-2 1/2"
8	M61	1'-2 1/2"
9	M113	SCRAP
10	M112	SCRAP
11	M05	SCRAP

FLANGE BRACE TABLE FRAME LINE 3		
ID	MARK	LENGTH
1	FB29.8	2'-5 3/4"
2	FB15.8	1'-3 3/4"

CONNECTION PLATES FRAME LINE 3	
ID	MARK/PART
1	d1
2	d2
3	r1
4	f1
5	n1
6	b1
7	c1
8	c2



ENDWALL FRAMING: FRAME LINE 3



ENDWALL SHEETING & TRIM: FRAME LINE 3

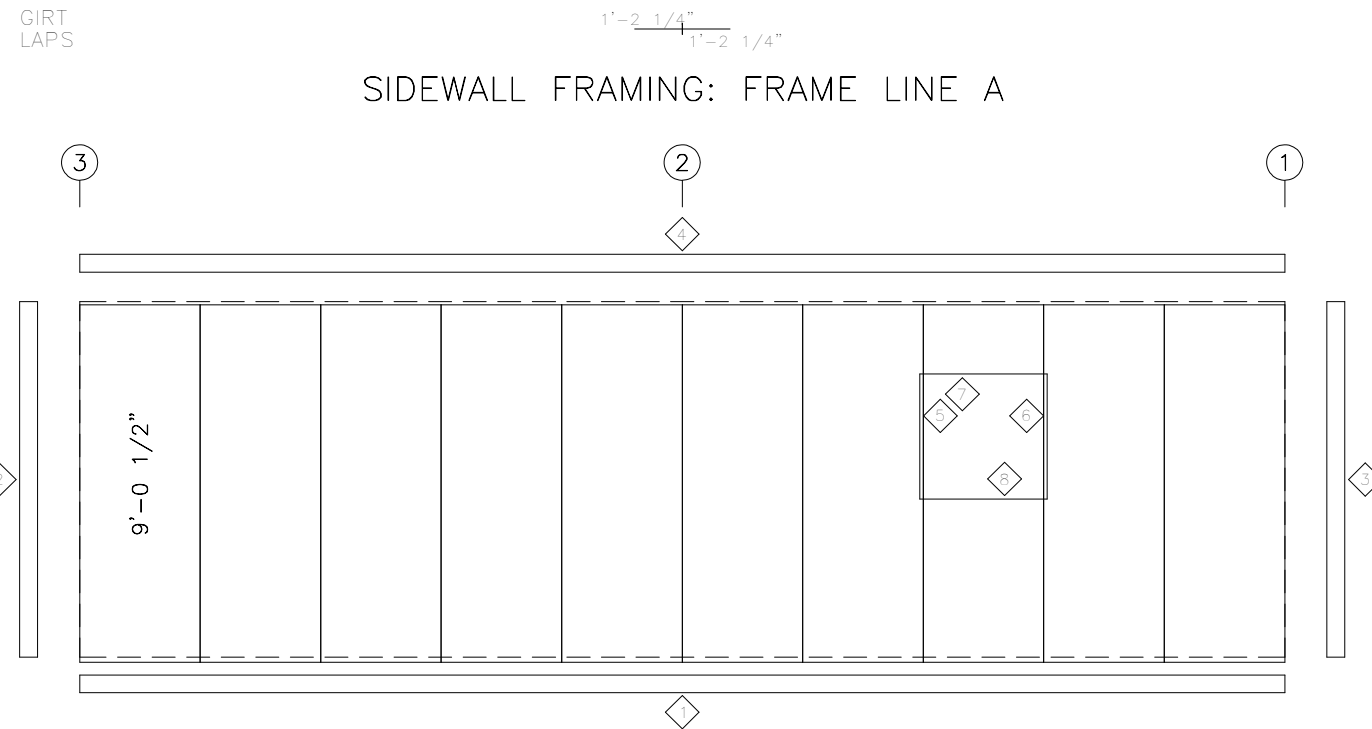
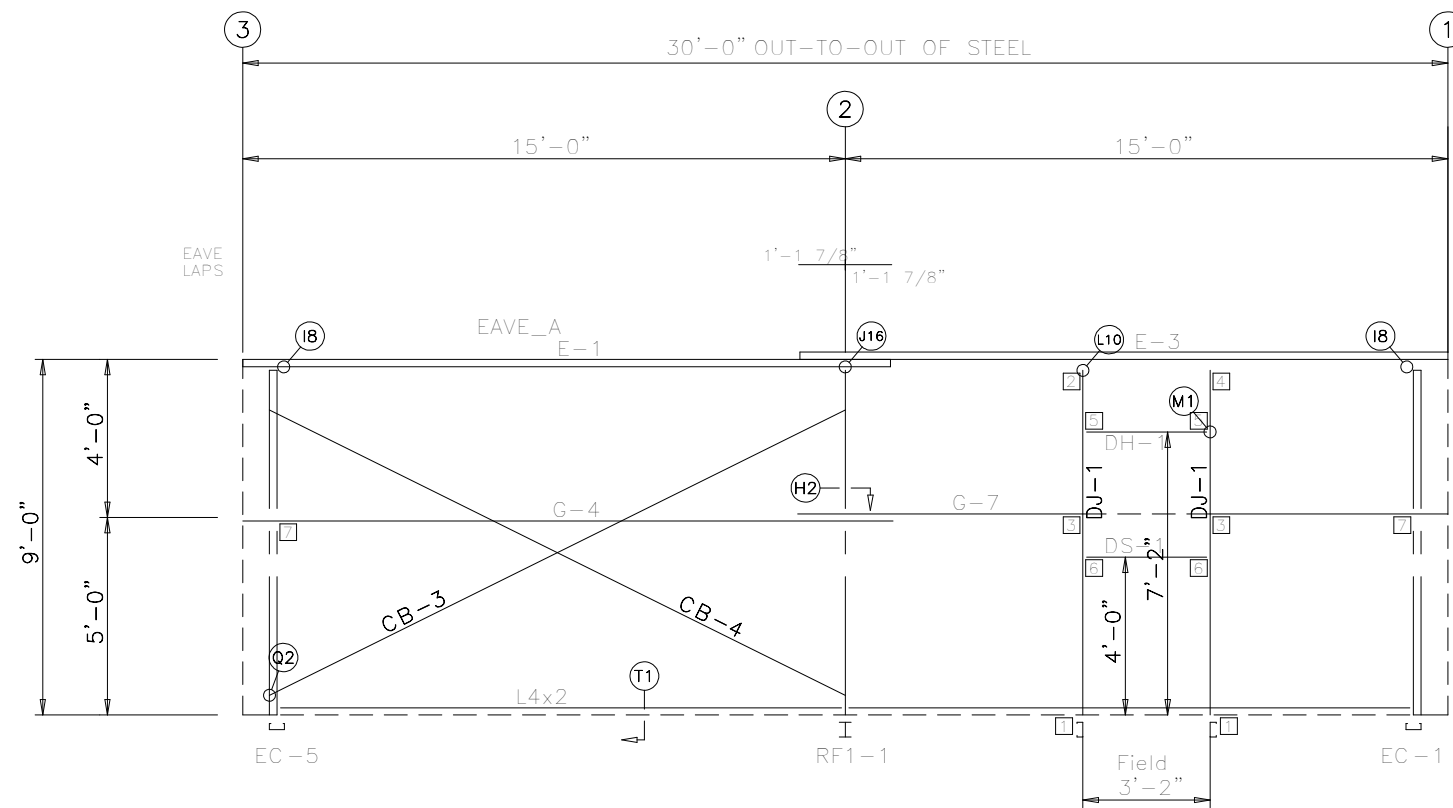
PANELS: 26 Ga. SSN - NEED TO DISCUSS 0

GIRT LAPS 1'-2 1/4" 1'-2 1/4" 1'-2 1/4" 1'-2 1/4"

DRAWING STATUS:
 FOR CONSTRUCTION
FINAL DRAWINGS USED FOR ERECTION PURPOSES
 FOR APPROVAL / PERMIT
NOT TO BE USED FOR ERECTION PURPOSES
 PRELIMINARY ONLY
ISSUED FOR CONFIRMATION OF SCOPE ONLY



DESCRIPTION: ENDWALL FRAMING						
CUSTOMER:				PROJECT: 20x30x9		
LOCATION: Brampton, ON. L6S 1W8						
DRN. BY	CK'D BY	DATE	SCALE	REV.	QUOTATION NO.	SHEET NO.
KN	PT		N.T.S.	01	24-4763	OF



SIDEWALL FRAMING: FRAME LINE A

SIDEWALL SHEETING & TRIM: FRAME LINE A
 PANELS: 26 Ga. SSN - NEED TO DISCUSS 0

MEMBER TABLE FRAME LINE A		
MARK	PART	LENGTH
DJ-1	8C16	8'-3"
DH-1	8C16	3'-1 1/2"
DS-1	8C16	3'-1 1/2"
E-1	8EZ14	16'-1 5/8"
E-3	8EZ14	16'-1 5/8"
G-4	8Z14	16'-2"
G-7	8Z14	16'-2"
CB-3	CB0375	15'-10 1/2"
CB-4	CB0375	15'-5 1/4"

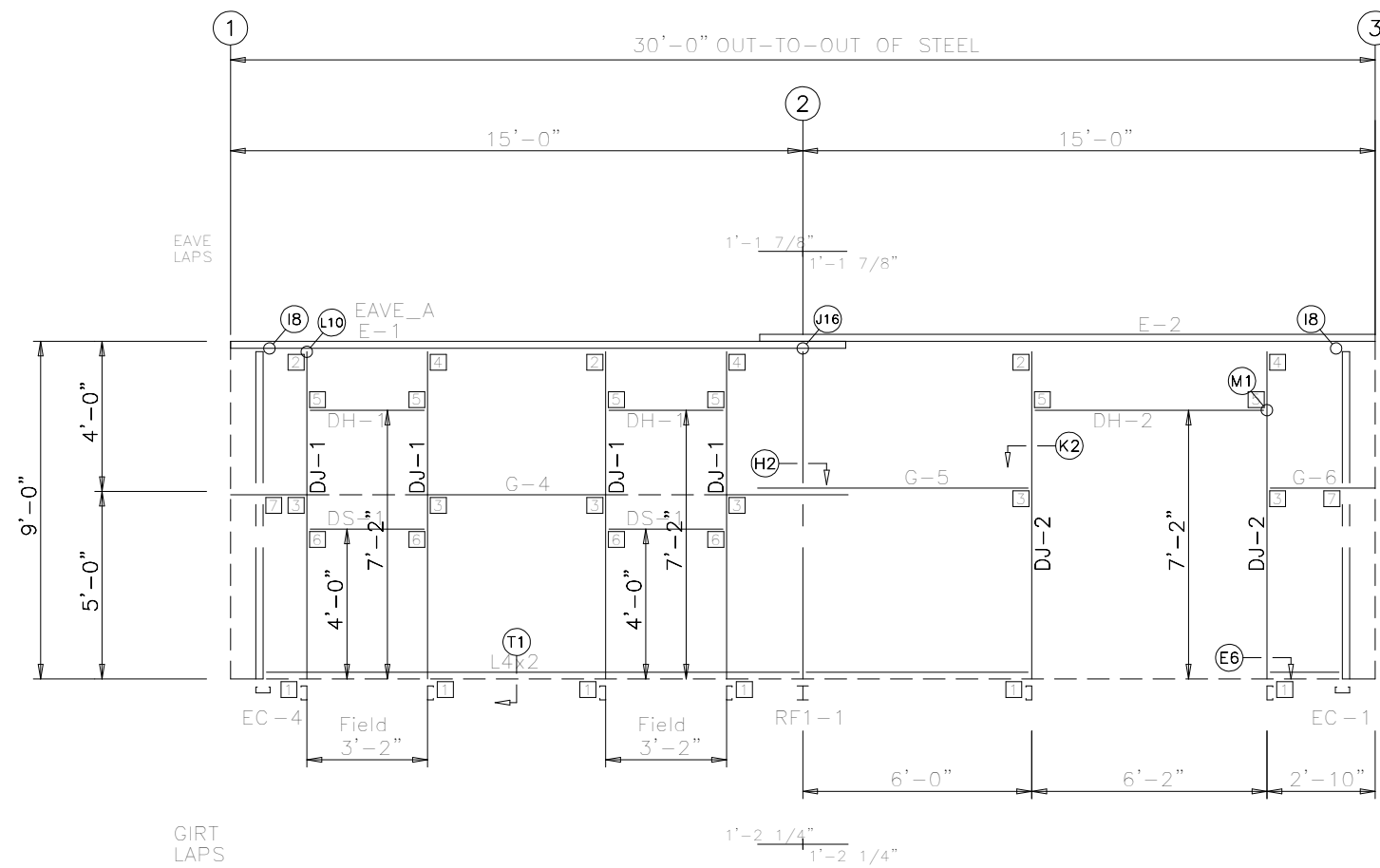
TRIM TABLE FRAME LINE A		
ID	PART	LENGTH
1	M04	20'-2"
2	M128	SCRAP
3	M128	20'-2"
4	M02	20'-2"
5	M113	SCRAP
6	M113	20'-2"
7	M112	20'-2"
8	M05	SCRAP

CONNECTION PLATES FRAME LINE A	
ID	MARK/PART
1	f1
2	e1
3	b1
4	e2
5	c1
6	c2
7	d1

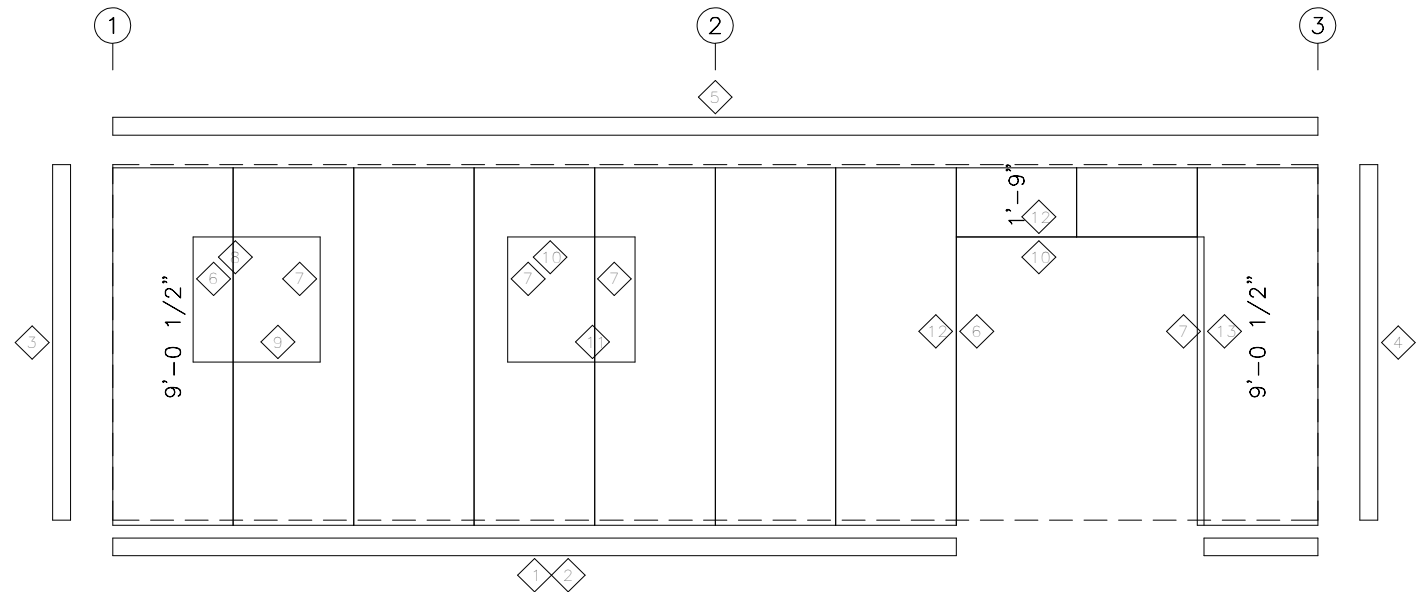


DRAWING STATUS:	
<input type="checkbox"/>	FOR CONSTRUCTION <small>FINAL DRAWINGS USED FOR ERECTION PURPOSES</small>
<input type="checkbox"/>	FOR APPROVAL / PERMIT <small>NOT TO BE USED FOR ERECTION PURPOSES</small>
<input type="checkbox"/>	PRELIMINARY ONLY <small>ISSUED FOR CONFIRMATION OF SCOPE ONLY</small>

DESCRIPTION: SIDEWALL FRAMING		PROJECT: 20x30x9	
CUSTOMER:		LOCATION: Brampton, ON. L6S 1W8	
DRN. BY	CK'D BY	DATE	SCALE
KN	PT		N.T.S.
REV.	QUOTATION NO.	SHEET NO.	
01	24-4763	OF	



SIDEWALL FRAMING: FRAME LINE D



SIDEWALL SHEETING & TRIM: FRAME LINE D

PANELS: 26 Ga. SSN - NEED TO DISCUSS 0

MEMBER TABLE FRAME LINE D		
MARK	PART	LENGTH
DJ-1	8C16	8'-3"
DJ-2	8C16	8'-3"
DH-1	8C16	3'-1 1/2"
DH-2	8C16	6'-1 1/2"
DS-1	8C16	3'-1 1/2"
E-1	8EZ14	16'-1 5/8"
E-2	8EZ14	16'-1 5/8"
G-4	8Z14	16'-2"
G-5	8Z14	6'-11 1/4"
G-6	8Z14	2'-6 3/4"

TRIM TABLE FRAME LINE D		
ID	PART	LENGTH
1	M04	20'-2"
2	M04	SCRAP
3	M128	SCRAP
4	M128	20'-2"
5	M02	20'-2"
6	M113	20'-2"
7	M113	SCRAP
8	M112	20'-2"
9	M05	20'-2"
10	M112	SCRAP
11	M05	SCRAP
12	M108	20'-2"
13	M108	SCRAP

CONNECTION PLATES FRAME LINE D	
ID	MARK / PART
1	f1
2	e1
3	b1
4	e2
5	c1
6	c2
7	d1

DRAWING STATUS:

FOR CONSTRUCTION
FINAL DRAWINGS USED FOR ERECTION PURPOSES

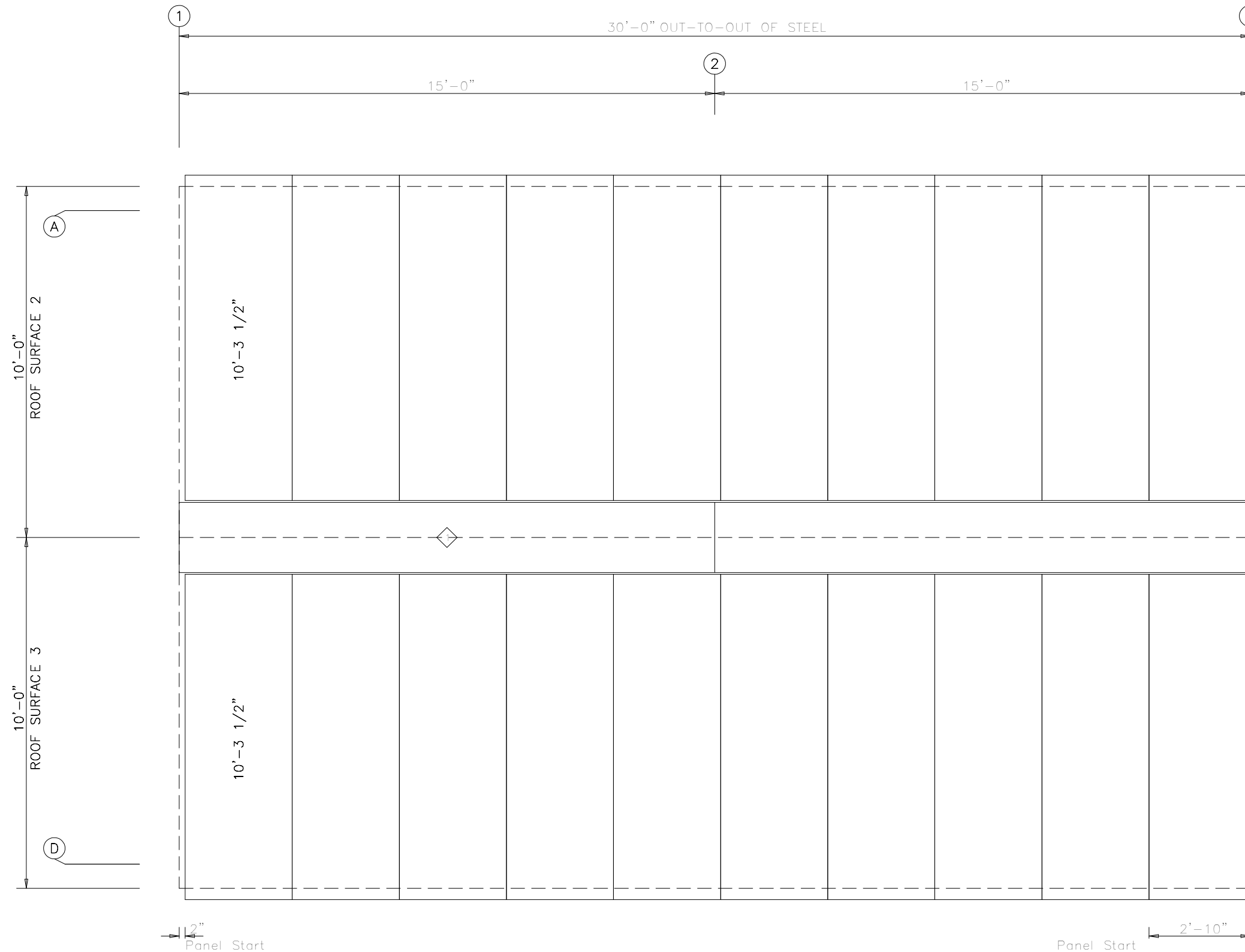
FOR APPROVAL / PERMIT
NOT TO BE USED FOR ERECTION PURPOSES

PRELIMINARY ONLY
ISSUED FOR CONFIRMATION OF SCOPE ONLY



DESCRIPTION: SIDEWALL FRAMING						
CUSTOMER:				PROJECT: 20x30x9		
LOCATION: Brampton, ON. L6S 1W8						
DRN. BY	CK'D BY	DATE	SCALE	REV.	QUOTATION NO.	SHEET NO.
KN	PT		N.T.S.	01		OF

TRIM TABLE		
ROOF PLAN		
ID	PART	LENGTH
1	M01	20'-2"



ROOF SHEETING PLAN

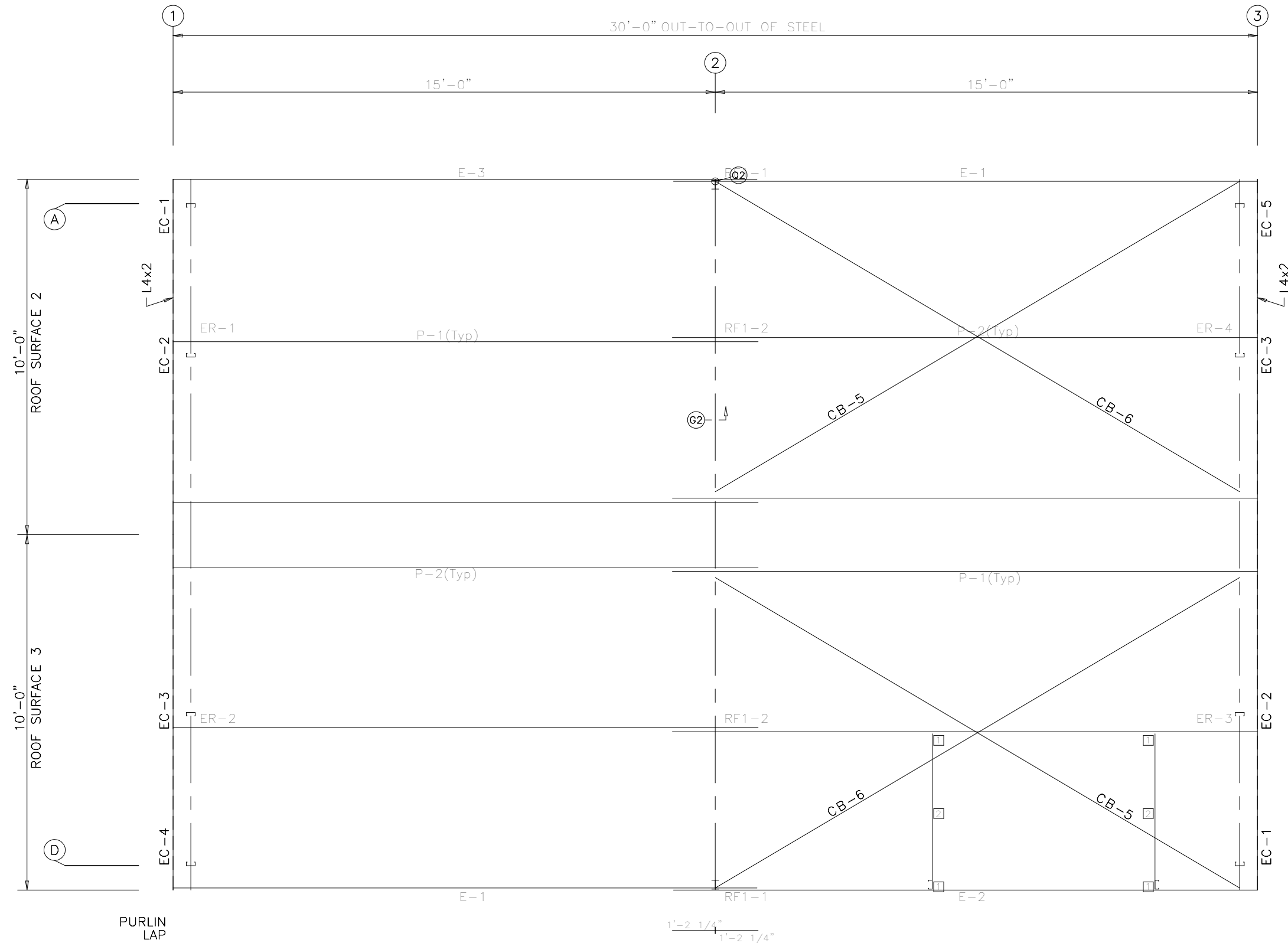
PANELS: 26 Ga. SSN - GALVALUME

2

DRAWING STATUS:	
<input type="checkbox"/>	FOR CONSTRUCTION <small>FINAL DRAWINGS USED FOR ERECTION PURPOSES</small>
<input type="checkbox"/>	FOR APPROVAL / PERMIT <small>NOT TO BE USED FOR ERECTION PURPOSES</small>
<input type="checkbox"/>	PRELIMINARY ONLY <small>ISSUED FOR CONFIRMATION OF SCOPE ONLY</small>



DESCRIPTION: ROOF SHEETING						
CUSTOMER:				PROJECT: 20x30x9		
LOCATION: Brampton, ON. L6S 1W8						
DRN. BY	CK'D BY	DATE	SCALE	REV.	QUOTATION NO.	SHEET NO.
KN	PT		N.T.S.	01	24-4763	OF



MEMBER TABLE ROOF PLAN		
MARK	PART	LENGTH
P-1	8Z14	16'-2"
P-2	8Z14	16'-2"
E-1	8EZ14	16'-1 5/8"
E-2	8EZ14	16'-1 5/8"
E-3	8EZ14	16'-1 5/8"
CB-5	CB0375	16'-4 3/4"
CB-6	CB0375	16'-1 1/4"

TRIM TABLE ROOF PLAN		
ID	PART	LENGTH
1	M01	20'-2"

CONNECTION PLATES ROOF PLAN		
ID	MARK/PART	
1	d3	
2	JPB	

10'-3 1/2" (10)

(2)

10'-3 1/2" (10)

ROOF SHEETING

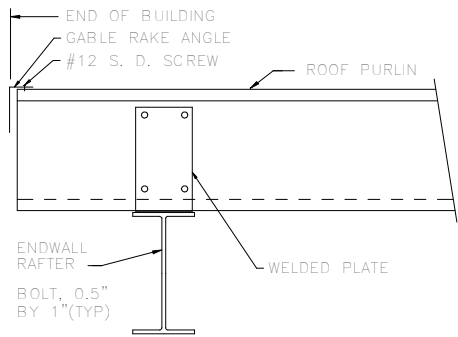
PANELS: 26 Ga. SSN GALVALUME

ROOF FRAMING PLAN

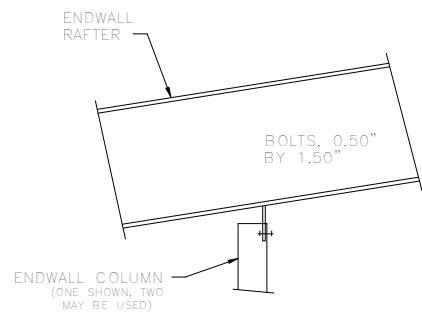
DRAWING STATUS:	
<input type="checkbox"/>	FOR CONSTRUCTION <small>FINAL DRAWINGS USED FOR ERECTION PURPOSES</small>
<input type="checkbox"/>	FOR APPROVAL / PERMIT <small>NOT TO BE USED FOR ERECTION PURPOSES</small>
<input type="checkbox"/>	PRELIMINARY ONLY <small>ISSUED FOR CONFIRMATION OF SCOPE ONLY</small>



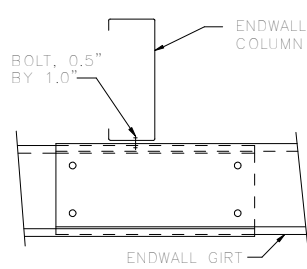
DESCRIPTION: ROOF FRAMING						
CUSTOMER:				PROJECT: 20x30x9		
LOCATION: Brampton, ON. L6S 1W8						
DRN. BY	CK'D BY	DATE	SCALE	REV.	QUOTATION NO.	SHEET NO.
KN	PT		N.T.S.	01	24-4763	OF



A7 SECTION THRU ENDWALL RAFTER

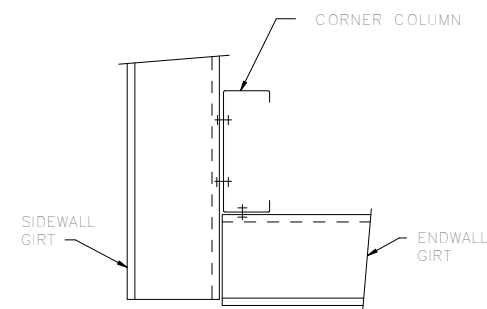


B4 ENDWALL RAFTER TO COLUMN

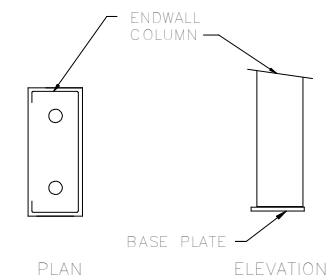


NOTE: FLANGE BRACES MAY BE PRESENT

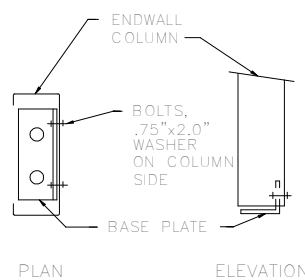
C7 WALL GIRT TO ENDWALL COLUMN



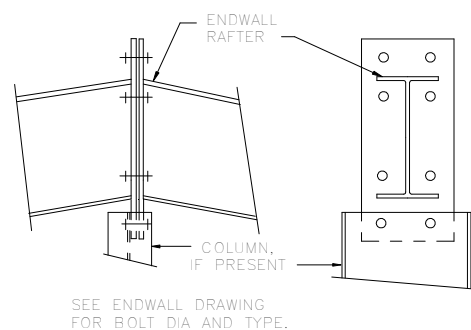
D7 CORNER COLUMN TO WALL GIRT



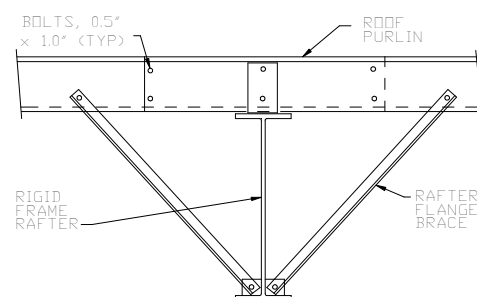
E5 BASE PLATE TO ENDWALL COLUMN OR DOOR JAMB



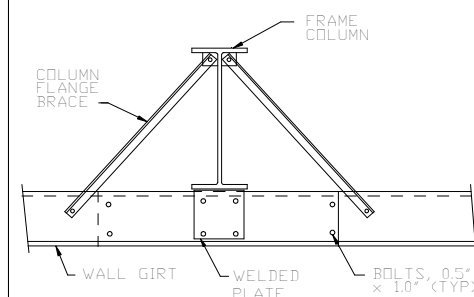
E6 BASE PLATE FOR ENDWALL COLUMN OR DOOR JAMB



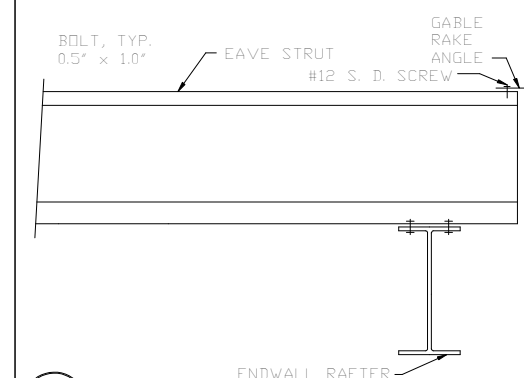
F12 RAFTER SPLICE AT SURFACE CHANGE



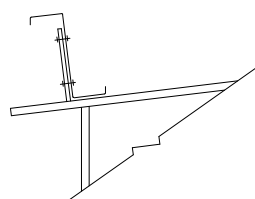
G2 ROOF PURLIN TO INTERIOR FRAME RAFTER



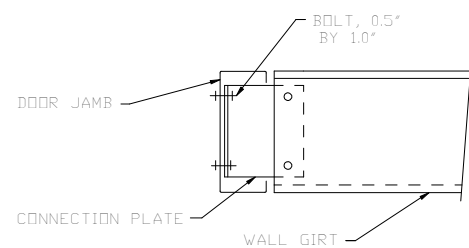
H2 WALL GIRT TO FRAME COLUMN



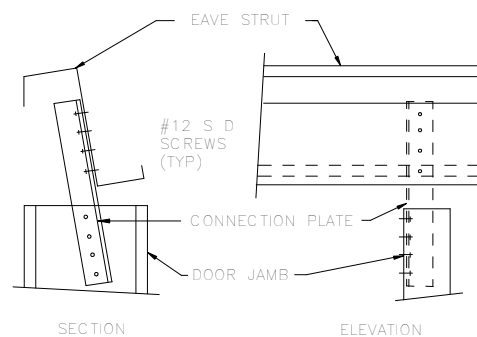
I8 EAVE STRUT TO ENDWALL RAFTER



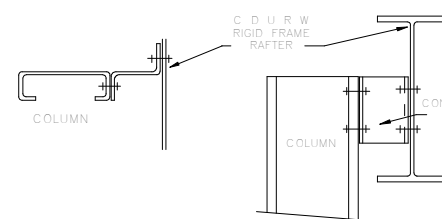
J16 EAVE STRUT TO RIGID FRAME



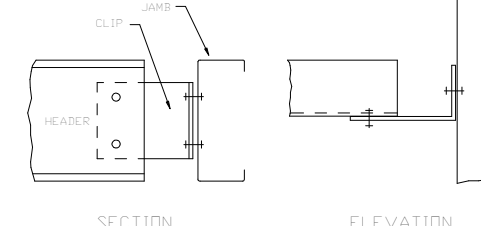
K2 WALL GIRT TO DOOR JAMB



L10 DOOR JAMB TO ZEE EAVE STRUT



L97 C/U COLUMN TO RIGID FRAME RAFTER



M1 HEADER TO C JAMB

DRAWING STATUS:

- FOR CONSTRUCTION
FINAL DRAWINGS USED FOR ERECTION PURPOSES
- FOR APPROVAL / PERMIT
NOT TO BE USED FOR ERECTION PURPOSES
- PRELIMINARY ONLY
ISSUED FOR CONFIRMATION OF SCOPE ONLY

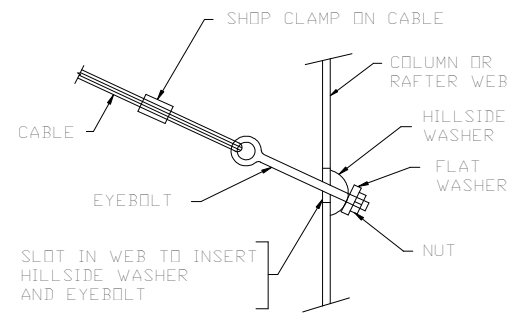


DESCRIPTION: **DETAIL DRAWINGS**

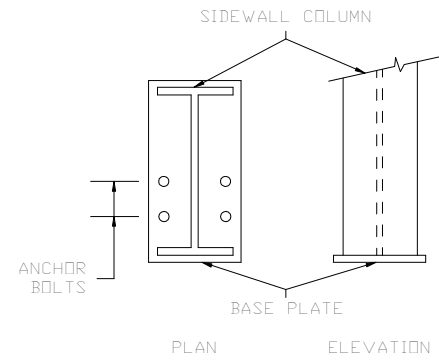
CUSTOMER: PROJECT: 20x30x9

LOCATION: Brampton, ON. L6S 1W8

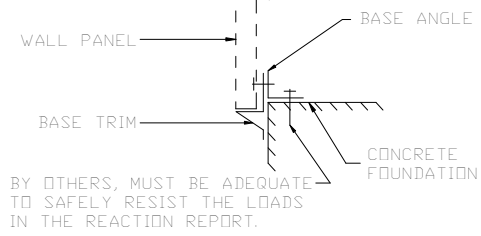
DRN. BY	CK'D BY	DATE	SCALE	REV.	QUOTATION NO.	SHEET NO.
KN	PT		N.T.S.	01	24-4763	OF



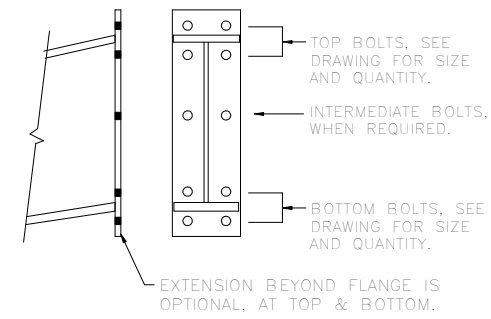
Q2 DIAGONAL CABLE, EYEBOLT END



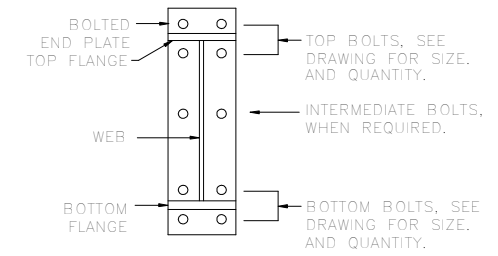
R2 ANCHOR BOLTS AT SIDEWALL COLUMN



T1 SECTION THRU WALL PANEL AND CONCRETE FOUNDATION



U2 BOLTED END PLATE CONNECTION AT BUILDING PEAK



U3 BOLTS FOR RAFTER TO COLUMN CONNECTION

DRAWING STATUS:

FOR CONSTRUCTION
FINAL DRAWINGS USED FOR ERECTION PURPOSES

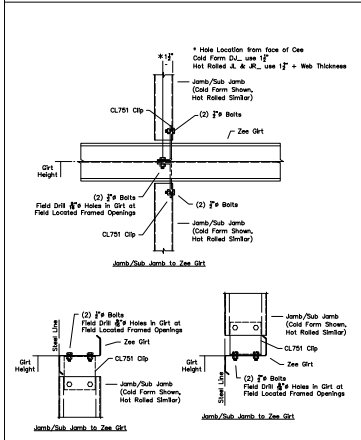
FOR APPROVAL / PERMIT
NOT TO BE USED FOR ERECTION PURPOSES

PRELIMINARY ONLY
ISSUED FOR CONFIRMATION OF SCOPE ONLY

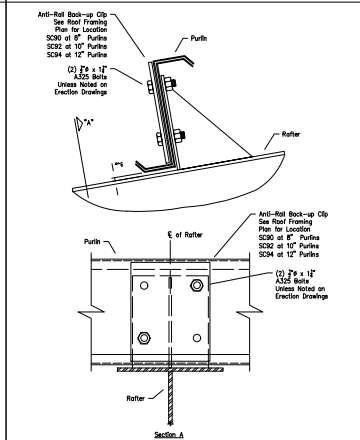


DESCRIPTION: DETAIL DRAWINGS						
CUSTOMER:					PROJECT: 20x30x9	
LOCATION: Brampton, ON. L6S 1W8						
DRN. BY	CK'D BY	DATE	SCALE	REV.	QUOTATION NO.	SHEET NO.
KN	PT		N.T.S.	01	24-4763	OF

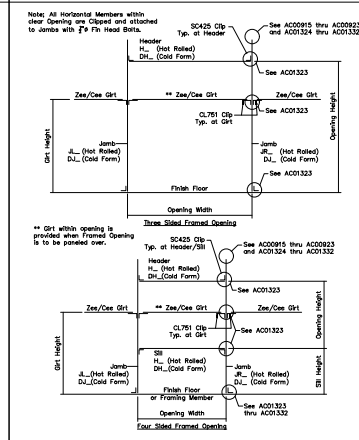
Bolted Clips - Framed Opening Connections - Cold Form and Hot Rolled Jamb/Sub Jamb to Zee Girt



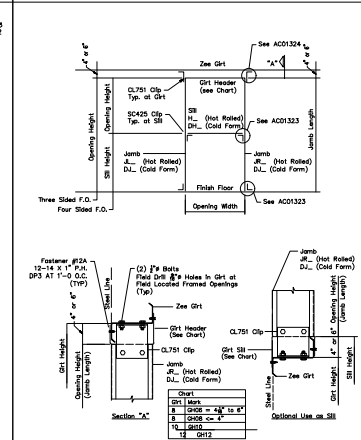
Purlin with Anti-Roll Back-up Clip at Rafter



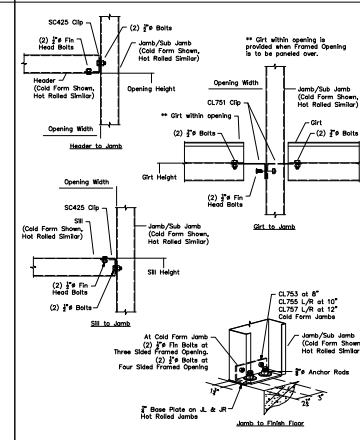
Bolted Clips - Framed Opening Connections - Cold Form and Hot Rolled Cee - Three and Four Sided Openings



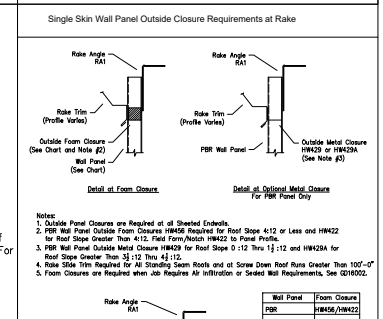
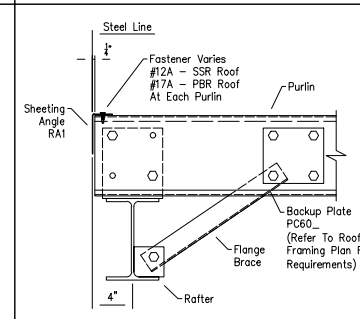
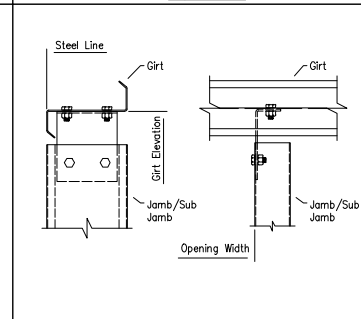
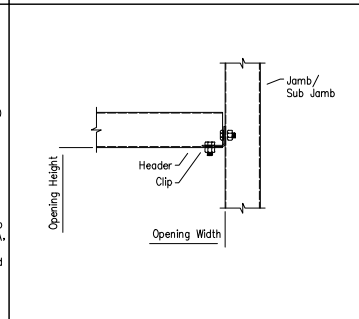
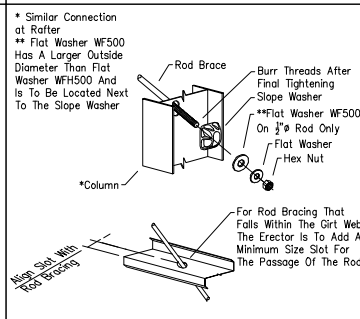
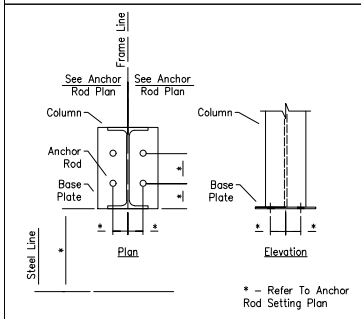
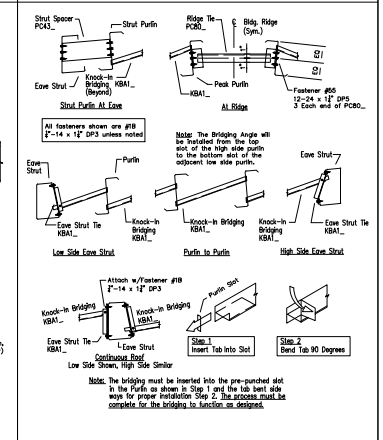
Bolted Clips - Framed Opening Connections - Three and Four Sided Openings - Girt Header



Bolted Clips - Framed Opening Connections - Cold Form and Hot Rolled Base, Girt, Header, and Sill to Jamba



Knock-In Bridging Installation - Less Than 3:12 Single Row



Anchor Rods At Frame Column

Rod Brace Attachment At Web

Header To Cold Form Jamb/Sub Jamb

Single Cold Form Jamb/Sub Jamb to Girt

Purlin to Bearing Frame Hot Rolled Rafter

Wall Panel	Form Closure
PFC	HW420
AVP	HW425
PBU	HW430
Vastachadow	HW435
Wald	HW440
PBC	HW442
PRO	HW443
Showerb	HW444
Designer Series (Fixed Only)	HW437
RBR (Overseas Rotted FRP)	HW450
RBU (Overseas Rotted FRP)	HW459
	7.2
	HW461

Various Fasteners

Fasteners

PER, PBU, AVP, Vastachadow, RBR, RBU

Fastener #17 12-14 x 1" SD W/Washer Hex Head	Fastener #38 1/4" x 2" SD W/O Washer Hex Head	Fastener #12A 12-18 x 1" Pivcock SD W/O Washer
Fastener #50 12-24 x 1/2" SD DPS W/O Washer Hex Head	Fastener #70 12-24 x 1/2" SD DPS W/O Washer Hex Head	Fastener #42 1/4" x 1" SD W/O Washer Hex Head
Fastener #75 12-14 x 2" SD W/O Washer Hex Head	Fastener #81 12-14 x 1 1/2" SD W/O Washer Hex Head	Fastener #8 1/4" x 1" SD W/O Washer Hex Head
Fastener #16 12-24 x 1/2" Pivcock SD DPS W/O Washer	Fastener #46 1/4" x 1" ST TP 8 W/Washer Hex Head	

Fastener #14 1/8" x 3/16" Pop Rivet Stainless Steel	Fastener #14B 1/8" x 3/8" Pop Rivet Stainless Steel	Fastener #43L L.P. Member Screw (Long Life) 1/4" x 1 1/4" 5/16" Hex Washer Head W/ 1/8" O.D. Washer
Fastener #35 #4 x 1 1/8" O.D. Bonded Washer	Fastener #226 3/16" x 9/16" Closed End Rivet	Fastener #228 10 x 1/2" Grammet Washer
Fastener #44L L.P. Sillish Screw (Long Life) 1/4" x 1 1/4" 5/16" Hex Washer Head W/ 1/8" O.D. Washer	Fastener #221 8-18 x 1/2" Trim Screw	Fastener HW399 #8 x 1" Rubber Grammet 1/4" Hex Head W/ Washer

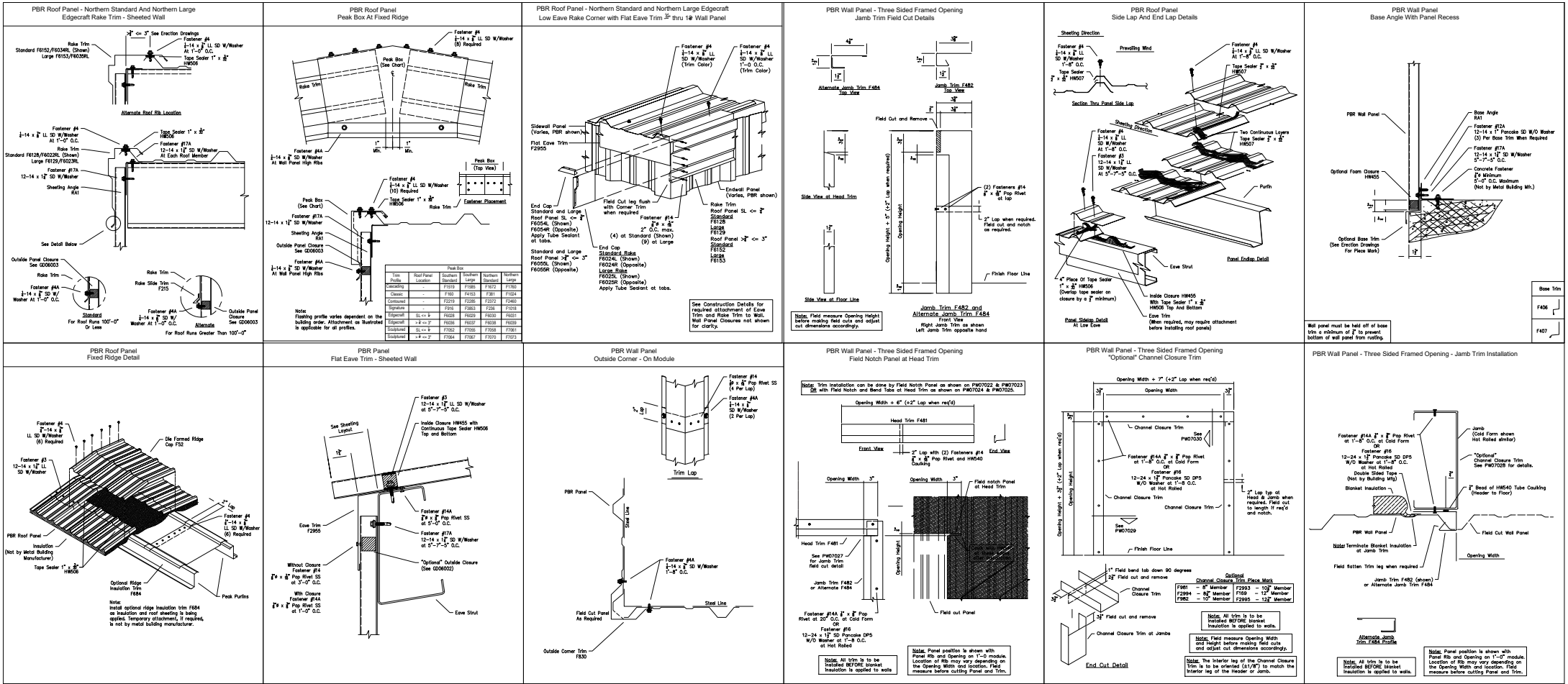
Wall Fasteners	Raft Fasteners
Member Screw Fastener #17A 12-14 x 1" Hex Washer Head W/Washer	Member Screw Fastener #5 12-14 x 1" Hex Washer Head W/Washer
Member Screw Optional Fastener #78 12-14 x 1" Hex Washer Head W/Washer	Member Screw Optional Fastener #3A 12-14 x 1" Hex Washer Head W/Washer
Member Screw Optional Fastener #28 12-14 x 2" Hex Washer Head W/Washer	Member Screw Optional Fastener #8 12-14 x 2" Hex Washer Head W/Washer
Sillish Screw Fastener #4A 1/4" x 1" Hex Washer Head W/Washer	Sillish Screw Fastener #4 1/4" x 1" Hex Washer Head W/Washer



DRAWING STATUS:

FOR CONSTRUCTION
 FINAL DRAWINGS USED FOR ERECTION PURPOSES
 FOR APPROVAL / PERMIT
 NOT TO BE USED FOR ERECTION PURPOSES
 PRELIMINARY ONLY
 ISSUED FOR CONFIRMATION OF SCOPE ONLY

DESCRIPTION: DETAIL DRAWINGS	
CUSTOMER:	PROJECT: 20x30x9
LOCATION: Brampton, ON. L6S 1W8	
DRN. BY: KN	CK'D BY: PT
DATE:	SCALE: N.T.S.
REV.:	QUOTATION NO. 24-4763
	SHEET NO.



15 Aug 2024

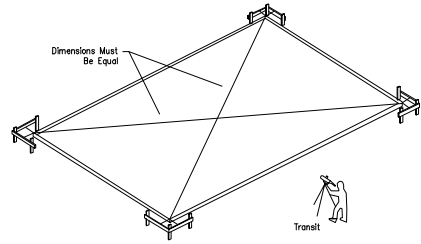
DRAWING STATUS:

FOR CONSTRUCTION
 FINAL DRAWINGS USED FOR ERECTION PURPOSES
 FOR APPROVAL / PERMIT
 NOT TO BE USED FOR ERECTION PURPOSES
 PRELIMINARY ONLY
 ISSUED FOR CONFIRMATION OF SCOPE ONLY

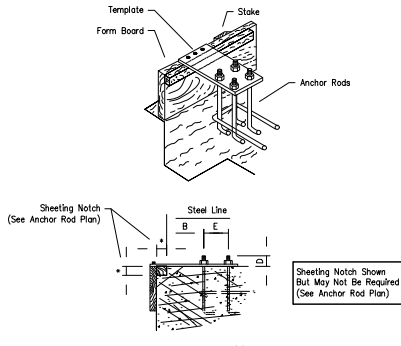
DESCRIPTION: DETAIL DRAWINGS					
CUSTOMER:			PROJECT: 20x30x9		
LOCATION: Brampton, ON. L6S 1W8					
DRN. BY	CK'D BY	DATE	SCALE	REV.	QUOTATION NO.
KN	PT		N.T.S.	01	24-4763
					SHEET NO.
					OF

Building Anchorage

- To Determine That The Foundation Is Square, Measure Diagonal Dimensions To Be Sure They Are Of Equal Length.
- To Determine That The Foundation Is Level, Set Up A Transit Or Level And Use A Level Rod To Obtain The Elevation At All Columns.
- Carefully Check The Location Of All Anchor Rods Against The Anchor Rod Setting Plan Furnished By The Manufacturer. All Dimensions Must Be Identical To Assure A Proper Start-up.



It Is Extremely Important That Anchor Rods Are Placed Accurately And In Accordance With The Anchor Rod Setting Plan. All Anchor Rods Should Be Held In Place With A Template Or Similar Means, So That They Will Remain Plumb And In Correct Location During The Placement Of The Concrete. A Final Check Should Be Made After Completion Of The Concrete Work And Prior To The Steel Installation. This Will Allow Necessary Corrections To Be Made Before Costly Installation Labor And Equipment Arrives.

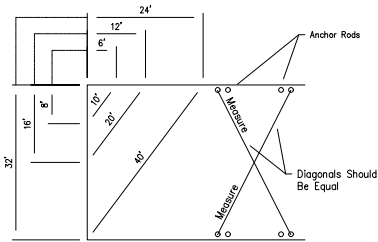


Pre-Erection Notes:

The Following Notes, Procedures And Suggested Recommendations Are Important Parts Of The Pre-Erection Process.

- Prior To The Time The Erection Crew Arrives, A Responsible Person Should Check The Job Site For Foundation Readiness, Square, And Accuracy And Anchor Rod Size And Location.

The Drawing Shown Below Indicates A Method Which May Be Used To Check The Foundation And Bolts For Square.

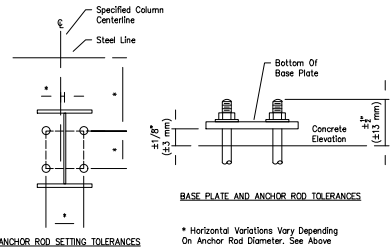


Measure Along Adjacent Sides Of Foundation Using A Pair Of Dimensions Shown. If The Diagonal Distance Between These Points Is As Noted, The Corner Is Square. Diagonal Measurements Between Opposite Anchor Rods Will Indicate If These Bolts Are Set Square.

AISC Code Of Standard Practice For Steel Building And Bridges Tolerances For Setting Anchor Rods

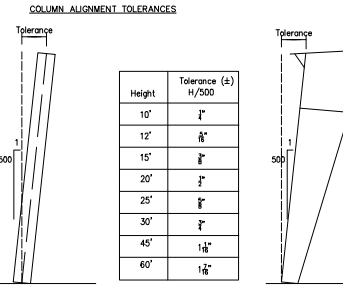
Anchor Rod Diameter, Inches (mm) *Horizontal Variation, Inches (mm)

1" and 1 1/8" (19 And 22 mm)	1/8" (6 mm)
1 1/4", 1 1/2" (25, 31, 38 mm)	3/8" (10 mm)
1 3/4", 2", 2 1/4" (44, 50, 63 mm)	1/2" (13 mm)

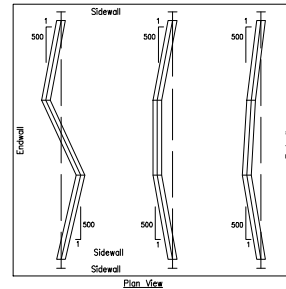


Erection Tolerances

ERECTION BRACING: It Is The Responsibility Of The Erector To Determine, Furnish And Install All Temporary Supports Such As Temporary Guys, Beams, Falsework, Cribbing, Or Other Elements Required For The Erection Operation (In Accordance With Section 7.10.3 Of ANS/AISC 303, Code Of Standard Practice For Steel Building And Bridges).



ALIGNMENT TOLERANCE FOR MEMBERS WITH FIELD SPLICES



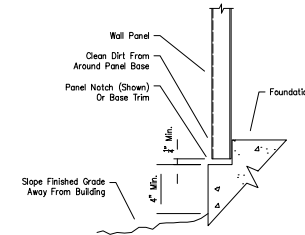
General Erection Notes

- All Structural Framing Members, Purlins, Girts, Clips, Flange Braces, Bolts, Bracing Systems, Roof And Wall Panels, Etc. Must Be Installed As Shown On Erection Drawings.
- It Is Extremely Important, Especially During Construction, That Panels At The Eaves, Rakes And Ridges Be Kept Secure.

Panel Cautions And Notes

To Minimize Potential Of Corrosive Action At The Bottom Edge Of Wall Panels, The Contractor Must Assure That The Following Procedures Are Followed:

- The Concrete Foundation Should Be Cured For A Minimum Of Seven (7) Days Before Wall Panels Are Installed. (Uncured Concrete Is Highly Alkaline And Metal Panels Can Undergo Varying Degrees Of Corrosive Attack When In Direct Contact With The Concrete.) After The First Week Of The Curing Cycle, The Reaction Between Metallic Coatings On Steel And The Concrete Is Essentially Halted.
- Top Of Finish Grade At Building To Be A Minimum Of Four (4) Inches Below Bottom Of Panel.
- Finish Grade Is To Slope Away From Building To Ensure Proper Drainage.
- Upon Completion Of Finish Grading, All Dirt Is To Be Cleaned From Around Base Of Wall Panel Where It May Have Collected In Panel Notch Or On Base Trim.



Fastener Installation

Correct Fastener Installation Is One Of The Most Critical Steps When Installing Roof/Wall Panels. Drive The Fastener In Until It Is Tight And The Washer Is Firmly Seated. Do Not Overdrive Fasteners. A Slight Extrusion Of Neoprene Around The Washer Is A Good Visual Tightness Check. Always Use The Proper Tool To Install Fasteners. A Fastener Driver (Screw Gun) With A RPM Of 1700-2000 Should Be Used For Self-Drilling Screws. A 500-600 RPM Fastener Driver Should Be Used For Self-Tapping Screws. Discard Worn Sockets, These Can Cause The Fastener To Wobble During Installation.

Note: Always Remove Metal Filings From Surface Of Panels At The End Of Each Work Period. Rusting Filings Can Destroy The Paint Finish And Void Any Warranty.



Tape And Tube Sealant

Proper Tape And Tube Sealant Application Is Critical To The Weather Tightness Of A Building. Tape Sealant Should Not Be Stretched When Installed. Apply Only To Clean, Dry Surfaces. Keep Only Enough Sealants On The Roof That Can Be Installed In A Day. During Warm Weather, Store Sealants In A Cool Dry Place. During Cold Weather (Below 60°) Sealants Must Be Kept Warm (60°-90°) Until Application. After Tape Sealant Has Been Applied, Keep Protective Paper In Place Until Panel Is Ready To Be Installed.

Important Note

All Details, Recommendations And Suggestions Contained In This Erection Guide Of This Drawings Set Are For General Guidelines Only, And Not Meant To Be All-Inclusive. Industry Accepted Installation Practices With Regard To All Areas Not Specifically Discussed In This Section Should Be Followed. Only Experienced, Knowledgeable Installers Familiar With Accepted Practices Should Be Used To Assure A Quality Project.

It Is Emphasized That The Manufacturer Is Only A Manufacturer Of Metal Building Components And Is Not Engaged In The Installation Of Its Products. Opinions Expressed By The Manufacturer About Installation Practices Noted In The Erection Guide Are Intended To Represent Only A Guide. Both The Quality And Safety Of Installation And The Ultimate Customer Satisfaction With The Completed Building Are Determined By The Experience, Expertise, And Skills Of The Installation Crews, As Well As The Equipment Available For Handling The Materials, Actual Installation Operations, Techniques And Site Conditions Are Beyond The Manufacturers Control.



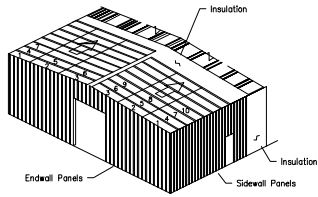
- DRAWING STATUS:**
- FOR CONSTRUCTION
FINAL DRAWINGS USED FOR ERECTION PURPOSES
 - FOR APPROVAL / PERMIT
NOT TO BE USED FOR ERECTION PURPOSES
 - PRELIMINARY ONLY
ISSUED FOR CONFIRMATION OF SCOPE ONLY

Erection Guide

DESCRIPTION: DETAIL DRAWINGS					
CUSTOMER:			PROJECT: 20x30x9		
LOCATION: Brampton, ON. L6S 1W8					
DRN. BY KN	CK'D BY PT	DATE	SCALE N.T.S.	REV. 01	QUOTATION NO. 24-4763
					SHEET NO. OF

PBR Roof Panels

For PBR Roofs With Ridge Panels, It Is Recommended That Both Sides Of The Ridge Be Sheeted Simultaneously. This Will Keep The Insulation Covered For The Maximum Amount Of Time And The Panel Ribs Can Be Kept In Proper Alignment For The Ridge Panel. This Is Critical On The PBR Panels So That The Ridge Caps Can Be Properly Installed. Check For Proper Coverage As The Sheeting Progresses.



Install The First Run Of Roof Panels Across The Building From Eave To Eave Or Eave To Ridge. To Allow Proper Installation Of The Rake Trim, The Starting Location For The First Panel Must Be As Shown In The Rake Details Included With The Erection Drawings. When The First Run Is Properly Located And Aligned With The Correct Endcaps And Eave Overhangs, Fasten To Purins. Roof Panels Should Be Installed So That The Sidelap Is In A Direction Away From Prevailing Wind. Refer To Appropriate Lap Details Included With The Erection Drawings.

Install Remaining Roof Insulation And Panels. To Avoid Accumulative Error Due To Panel Coverage Gain Or Loss, Properly Align Each Panel Before It Is Fastened. Occasional Checks Should Be Made To Ensure That Correct Panel Coverage Is Maintained. Special Attention Should Be Given To Fastener, Sealant and Closure Requirements. Refer To Details Included With The Erection Drawings.

At Finishing End Of Roof, The Last panels May Require Field Modification For Installation Of Rake Trim. Refer To Rake Details Included With The Erection Drawings. DO NOT BACK LAP THROUGH FASTENED ROOF PANELS.

NOTE: Roof Types And Installation Requirements Will Vary. Refer To The Appropriate Details For Specific Panel Used.

IMPORTANT: Loose Fasteners, Blind Rivets, Drill shavings, Etc., Must Be Removed From The Roof To Guard Against Corrosion.

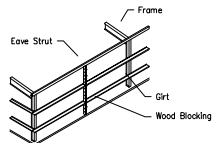
Wall Panels

Proper Horizontal And Vertical Alignment Of Supporting Structure (Girts Or Other Framing) Is The Responsibility Of The Installer. Failure To Align The Secondary members Properly Prior To Wall Installation Can Have A Direct Impact On The Final Appearance And Performance Of The Installed Wall System For Which The Metal Building Manufacturer Is Not Responsible.

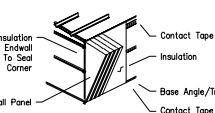
Before Installing Wall Panels, The Girts Must Be Aligned To A Level Position So That There Is No Visible Sag. This Should Be Done Directly Ahead Of Panel Installation.

Girt Leveling May Be Accomplished By Standing A Section Of Gable Angle Vertically Against The Outside Girt Flanges At Approximate Mid-bay Location. When Girts Are Level, Attach The Girt Flanges To The Angle With Vise Grip Pliers Or Temporary Screws. Wood Blocking Cut To Fit The Spaces May Also Be Used For Alignment.

Note: Temporary Girt Blocking Is Not Recommended On Concealed Fastener Panels. The Removal Of The Blocks After Panel Installation Can Cause Oil Canning.



Note: Wall Panel Type And Installation Details Will Vary Refer To The Erection Drawings And Details For The Specific Panel Used For Your Building.

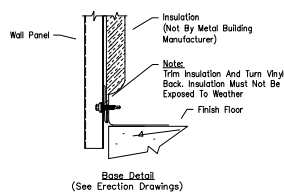
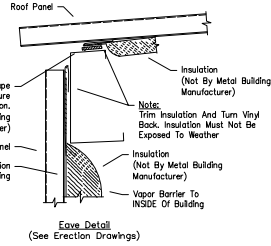


If Walls Are To Be Insulated With Blanket Insulation Over Girt, Girt Flanges, Base And Eave, Place A Continuous Run Of Contact Tape Along The Eave Strut And Base Member.

Note: At The Base, Cut Off The Insulation A Minimum Of 2" Above The Bottom Of The Wall Panel. This Will Prevent The Insulation From Hanging Below The Wall Panel And Wicking Moisture.

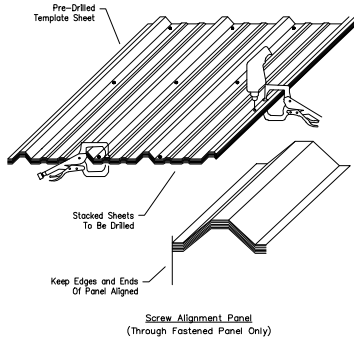
Erection Guide

Note: Additional Insulation May Be Required To Fit The Eave Strut And Prevent Condensation In Certain Climate Regions



Sidewall Panels Should Be Installed So That The Panel Sidelap Is In A Direction Away From The Prevailing Wind. Refer To Appropriate Lap Detail Included With Erection Drawings.

Note: Check Periodically To Ensure That All Panels Are Aligned And Plumb.

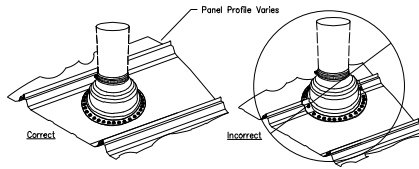


Note: After Drilling Panels, It Is Important To Clean Metal Filings Off All Panel Surfaces, Including Between Panels That Are Not Installed That Day. To Avoid Rust Stains.

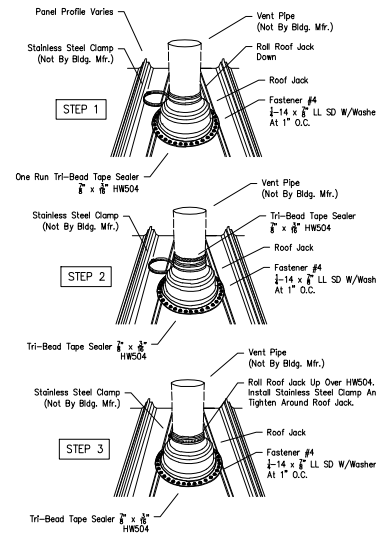
Roof Jack Installation when Not Supplied By Building Manufacturer

General Installation Notes

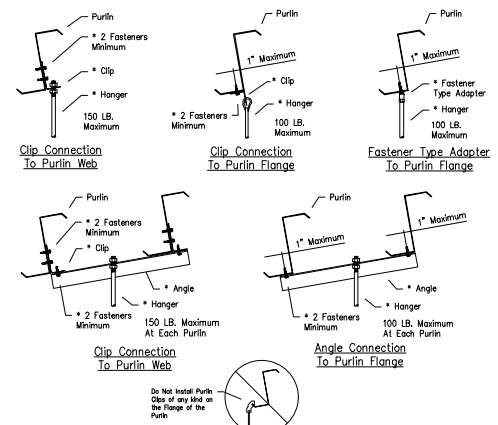
- Do Not Use Galvanized Roof Jacks, Lead Hats, Or Other Residential Grade Roof Jacks. These Roof Jacks Do Not Have 20 Year Service Life And In Case Of Lead Hats Will Cause Galvanic Corrosion Of The Roof Panel.
- Use EPDM Rubber Roof Jacks With An Integral Aluminum Band Bonded Into The Perimeter Of The Base. EPDM Roof Jacks Have A Temperature Range From -65°F To 212°F. Use Silicone Roof Jacks For High Temperatures. Silicone Roof Jacks Have A Temperature Range Of -100°F To 437°F.
- Retrofit Roof Jacks Are Available For Applications In Which The Top Of The Pipe Is Inaccessible, Eliminating The Possibility Of Sliding The Roof Jack Over The Top Of The Pipe.
- Do Not Use Tube Sealant To Seal The Roof Jack To The Roof Panels. Use Roll Tape Sealer Between The Roof Jack And The Roof Panel And Attach The Roof Jack To The Roof Panel With Fastener #4 1/4 x 1/4 x 1/8" LL SD W/Washer At 1" O.C. Around The Base Of The Roof Jack. See Table Below For Quantities.
- Trim The Top Of The Roof Jack To Fit Over The Pipe, Roll Down The Roof Jack Over The Pipe And Apply Tape Sealer For The Perimeter Of The Roof Jack Base Between The Roof Jack And The Roof Panel. Apply Tape Sealer Around The Pipe And Install A Stainless Steel Clamp (Not By Bldg. Mfr.) Over The Top Of The Roof Jack And Firmly Tighten To Form A Secure Compression Seal.
- If The Pipe Diameter Is So Large To Block The Flow Of Water Down The Roof Panel, A Flat Base Roof Curb Must Be Installed Into The Roof And The Roof Jack Will Be Sealed To The Curb. A Two Piece Curb May Be Required When The Top Of The Pipe Is Inaccessible.
- In Northern Climates, The Pipe Penetration Should Be Protected From Moving Ice Or Snow With A Snow Retention System Immediately Up Slope From The Pipe.



Install Pipe In Center To Allow Base Of Roof Jack To Lay Flat on Panel. Cannot Encompass More Than 75% Of Panel.



Suggested Method Of Purin Attachment For Building Accessories



* Denotes Material Not Provided By Metal Building Manufacturer.

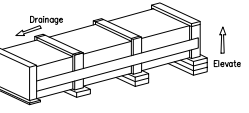
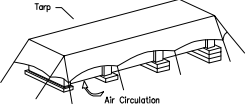
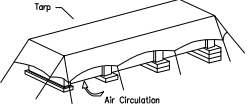
The Total Hanger Load Shall Not Exceed The Design Collateral Load For The Building. Example: 5'-0" (Purin Spacing) X 5'-0" (Hanger Spacing) X 6 PSF (collateral Load) = 150 Lbs.

See Cover Sheet For Design Collateral Load For This Building. Note: If The Building Is Designed For 0 PSF Collateral Load, Then Adding Any Suspended System (i.e. Duct Work, Piping, Lights, Ceilings, Etc.) Will Correspondingly Reduce The Design Live Load.



- DRAWING STATUS:**
- FOR CONSTRUCTION
FINAL DRAWINGS USED FOR ERECTION PURPOSES
 - FOR APPROVAL / PERMIT
NOT TO BE USED FOR ERECTION PURPOSES
 - PRELIMINARY ONLY
ISSUED FOR CONFIRMATION OF SCOPE ONLY

DESCRIPTION: DETAIL DRAWINGS						
CUSTOMER:				PROJECT: 20x30x9		
LOCATION: Brampton, ON. L6S 1W8						
DRN. BY	CK'D BY	DATE	SCALE	REV.	QUOTATION NO.	SHEET NO.
KN	PT		N.T.S.	01	24-4763	OF

<p>Field Service Procedures</p> <p>In Order To Give You Prompt Service And Keep Problems To A Minimum, Please Handle Any Shortages Or Book Charges In The Following Manner:</p> <ol style="list-style-type: none"> Carefully Check Your Packing List While Unloading. Mark Any Items That Are Missing And Notify The Field Service Department At The Number Shown In The Title Block As Soon As Possible, Calling Someone Else Could Delay The Proper Response. <p>INITIAL CLAIM:</p> <p>In The Event Of An Error, The Customer Must Promptly Make A Written Or Verbal "Initial Claim" To The Manufacturer For The Correction Of Design, Drafting, Bill Of Materials Or Fabrication Error.</p> <p>The "Initial Claim" Associated With:</p> <ol style="list-style-type: none"> Description Of The Nature And Extent Of The Errors, Including Quantities. Description Of The Nature And Extent Of Proposed Corrective Work. Including Detailed Description Of The Errors, Including Quantities. Materials To Be Purchased From Other Than The Manufacturer, Including Estimated Quantities and Cost. Maximum Total Cost Of Proposed Corrective Work And Materials To Be Purchased From Other Than The Manufacturer. <p>SHORT MATERIALS:</p> <p>Immediately Upon Delivery Of Materials, Quantities Are To Be Verified By The Customer Against Quantities That Are Billed On The Shipping Documents. Neither The Manufacturer Nor The Carrier Is Responsible For Material Shortages Against The Quantities Billed On The Shipping Documents (Such Shortages Are Not Noted On The Shipping Documents When The Material Is Delivered And Acknowledged By The Carrier's Agent, If The Carrier Is The Manufacturer, Claims For Shortages Are To Be Made By The Customer To The Common Carrier, If The Material Quantities Differ From Those Billed On The Shipping Documents, Or The Quantities That Are Necessary To Complete The Metal Building According To The Order Documents, Claims To Be Made To The Manufacturer.</p> <p>DAMAGED OR DEFECTIVE MATERIAL:</p> <p>Damage Of Defective Material, Regardless Of The Degree Of Damage, Must Be Noted On The Shipping Documents By The Customer And Acknowledged By The Carrier's Agent. The Manufacturer Is Not Responsible For Material Damaged In Unloading Of Packages Or Nested Materials, Including, But Not Limited To, Fasteners, Sheet Metal, "C" And "Z" Sections And Covering Panels That Become Wet And/Or Damaged By Water While In The Possession Of Others. Packed Or Nested Material That Becomes Wet In Transit Must Be Unpacked, Unstacked And Dried By The Customer. If The Carrier Is The Manufacturer, The Customer Must Claim For Damage Directly To The Manufacturer. If The Carrier Is The Common Carrier, The Manufacturer Is Not Liable For Any Claim Whatever Including, But Not Limited To, Loss Of Or Damage To Material Resulting From Customer's Use Of Damaged Or Defective Materials That Can Be Detected By Visual Inspection.</p> <p>EXCESSIVE MATERIAL:</p> <p>The Manufacturer Reserves The Right To Recover Any Material Delivered In Excess Of Those Required By The Order Documents.</p> <p>DIL GANNING IS NOT A CAUSE FOR REJECTION</p>	<p>Authorization For Corrective Work</p> <p>Normal Erection Operations Include The Correction Of Minor Mistifs By Amounts Of Reaming, Chipping, Welding Or Cutting And The Drawing Of Elements Into Line Through The Use Of Drill Pins. Errors That Cannot Be Corrected By The Forgoing Means Or Which Require Major Changes In The Member Configuration Should Be Reported Immediately To The Owner And The Fabricator By The Erector. To Enable Whichever Is Reasonable Either To Correct The Error Or Approve The Most Efficient And Economical Method Of Correction To Be Used By Others. (AISC, 303-10, Section 7.14). If The Error Is The Fault Of The Manufacturer An "Authorization For Corrective Work" Must Be Issued In Writing By The Manufacturer To Authorize The Corrective Work At A Cost Not To Exceed The Maximum Total Cost Set Forth. Alternative Corrective Work Other Than That Proposed In The "Initial Claim" Will Be Directed By The Manufacturer In The "Authorization Of Corrective Work". Only The Field Service Department May Authorize Corrective Work.</p> <p>FINAL CLAIM:</p> <p>The "Final Claim" In Writing Must Be Forwarded By The Customer To The Manufacturer Within (10) Days Of The Completion Of The Corrective Work Authorized By The Manufacturer.</p> <p>THE "FINAL CLAIM" MUST INCLUDE:</p> <ol style="list-style-type: none"> Actual Number Of Man-Hours, Quantities Are To Be Verified By The Customer And Actual Hourly Rate Of The Work And Inance-Now On Total Actual Direct Labor. Taxes And Insurance On Total Actual Direct Labor. Other Direct Costs On Actual Direct Labor. Cost Of Materials (Not Minor Supplies) Authorized By The Manufacturer To Be Purchased From Other Than The Manufacturer, Including Copies Of Invoices. Total Actual Direct Cost Of Corrective Work (Sum Of 1, 2, 3, And 4). The "Final Claims Are Credited To The Customer By The Manufacturer In The Amount Not To Exceed The Maximum Total Cost Set Forth In The "Authorization For Corrective Work" Or The Total Direct Cost Of Corrective Work. <p>** IMPORTANT NOTE **</p> <p>Cost Of Equipment (Rental Or Depreciation), Small Tools, Supervision, Overhead And Profit, Are Not Subjected To Claims.</p> <p>SHIPMENT ARRIVAL TIME:</p> <p>Every Effort Will Be Made To See That The Carrier Arrives At The Jobsite On The Requested Hour. Manufacturer Makes No Warranty And Accepts No Responsibility For Costs Associated With A Shipment Not Arriving At The Requested Time Unless A Separate Agreement Has Been Made In Writing For A Guaranteed Arrival Time.</p>	<p>Unloading, Handling And Storage</p> <p>STRUCTURAL:</p> <p>A Great Amount Of Time And Trouble Can Be Saved If The Building Parts Are Unloaded At The Building Site According To A Pre-Arranged Plan. Proper Location And Handling Of Components Will Eliminate Unnecessary Handling.</p> <p>NOTE:</p> <p>Place Marks Are Stenciled On The Primary Structural Members At The Lower End, "1"-0" From The End. Inspect All Shipments Prior To Releasing The Tie-downs For Loads That May Have Shifted During Transit.</p> <p>MEMBER SAFETY PREC:</p> <p>Blocking Under Columns And Rafter Protect The Splice Plates And The Slab From Damage During The Unloading Process. It Also Facilitates The Placing Of Signs And Cobes Around Members For Later Lifting And Allows Members To Be Bolted Together Into Sub-assemblies While On The Ground. Extra Care Should Always Be Exercised In The Unloading Operation To Prevent Injuries From Handling Steel And To Prevent Damage To Materials And The Concrete Slab. If Water Is Allowed To Remain In Extended Periods In Bundles Of Primed Parts Such As Girts, Purlins, Etc., The Pigment Will Fade And The Paint Will Gradually Soften Reducing Its Bond To The Steel. Therefore, Upon Receipt Of A Job, All Bundles Of Primed Parts Should Be Flipped At An Angle To Allow Any Trapped Water To Drain Away And Permit Air Circulation For Drying. Puddles Of Water Should Not Be Allowed To Collect And Remain On Columns Or Rafters For Some Reason.</p> <p>The Cost Of Shop Primer Is Intended To Protect The Steel Framing Only For A Short Period Exposure To Ordinary Atmospheric Conditions. The Cost Of Shop Primer Does Not Provide The Uniformity Of Appearance, Or The Durability And Corrosion Resistance Of A Field Applied Finish Coat Of Paint Over Shop Primer.</p>	<p>Roof And Wall Panels</p> <p>Manufacturer's Roof And Wall Panels Include Color Coated, Galvalume, And Galvalanized, Provide Excellent Service Under Widely Varied Conditions. All Unloading And Erection Personnel Should Fully Understand That These Panels Are Quality Merchandise, Which Merits Careful Care And Handling.</p> <p>UNDER NO CIRCUMSTANCES SHOULD PANELS BE HANDLED ROUGHLY</p> <p>Packages Of Sheets Should Be Lifted Off The Truck With Extreme Care Taken To Ensure That No Damage Occurs To Ends Of The Sheets Or To Side Ribs. The Packages Should Be Stored Off The Ground Sufficiently High To Allow Air Circulation Underneath The Packages. This Avoids Ground Moisture And Deters People From Walking On The Packages. One End Of The Package Should Be Elevated To Encourage Drainage In Case Of Rain. The Manufacturer Exercises Caution During Fabrication An Shipping Operations To Ensure That All Panel Stock Is Kept Dry. However Due To Climatic Conditions, Water Formed By Condensation Of Humid Air Become Trapped Between Sheets. Water Can Also Be Trapped Between The Slatted Sheets When Exposed To Rain. This May Discoloration Caused By Trapped Moisture. The Stain Is Usually Superficial And Has Little Effect On The Appearance Or Service Life Of The Panels As Long As It Not Permitted To Remain On The Panel. However, Moisture In Contact With The Surface Of The Panel Over An Extended Period Can Severely Attack The Finish And Reduce The Effective Service Life. See R1-07 Titled "Damage From Condensation Or Trapped Water".</p> <p>CAUTION:</p> <p>Care Should Always Be Taken When Walking On Panels. Use Safety Lines And Net When Necessary. Panels Are Slippery, Wipe Dry Any Moisture Or Surface Material That Has Puddle From Bundles Stored On A Slope, Dew, Frost, Or Other Forms Of Moisture Greatly Increase The Slipperness Of The Panels. Always Assume Panel Surface Is Slippery And Act Accordingly. Never Walk Off Step On Skylights Or Translucent Panels.</p> <p>Use Wood Blocking To Elevate And Slope The Panels In A Manner That Allows Moisture To Drain. Wood Blocking Placed Between Bundles Will Provide Additional Air Circulation. When Handling Bundles Of Panels, Lift Either From Side Or From Top. Buried Edges May Scratch The Coated Surfaces When Sheets Are Slid Over One Another. Never Allow Panels To Be Walked On While On The Ground.</p> 	<p>Roof And Wall Panel Damage During Construction</p> <p>The Quality Of Workmanship In Steel Construction Practices And Handling Methods Used During The Construction Of The Metal Building Can Significantly Affect The Appearance And Performance Of The Building Panels. Panel Damage During Construction Can Be The Result Of Faulty Installation Methods And/Or Carelessness.</p> <p>Overdriven Fasteners Cause Indentations Or Shallow Pockets In The Panel Around The Fastener Head. Rain Water Or Condensation Moisture Combined With Atmospheric Pollutants (primarily Sulfur Dioxide) And Dirt Particles Collect In These Pockets. The Combination Of Pollutants And Water Creates Acid Solutions That Will Cause Corrosion Damage To The Panel And Fastener. Rain May Wash Some Pollutants Away, But Moisture In Form Of High Humidity Can Keep These Areas Wet And Continue The Problem. Overdriving The Fastener Also Forces The Sealing Washer From Under The Head Creating A Leak At This Point. Proper Torque Adjustment Of The Screws Can Or Preferably The Use Of A Depth Gauge Will Eliminate The Problem Of Overdriven Fasteners.</p> <p>It Is Extremely Important That All Drift Shavings From The Installation Of Panel Fasteners And Fillings From The Saw Cutting Of Panels Be Removed From The Panel Surface. Corrosion Can Occur In A Matter Of Hours When These Shavings Or Filings Are Not Removed And Are In Contact With Water Or Condensed Moisture When Panels Are Pre-Drilled Or Cut In The Stock Prior To Erection All Shavings Must Be Cleaned From Both Sides Of The Panel To Prevent Corrosion Of The Panel By These Particles. It Is Imperative That The Roof Be Swept Clean At Least Daily And Certainly At Job Completion. The Final Cleaning Of The Roof Should Be Done Prior To Installing The Gutter So That The Shavings Are Not Deposited Into The Gutter And Left To Corrode. Any Other Foreign Objects Or Debris Left By Construction Personnel Should Also Be Removed From The Roof During The Erection Of The Roof And The Installation Of Such Equipment As Air-Condition Units, Etc..</p> <p>Personnel Walking On The Panel Can Cause Damage. Workers Should Step Or Run In The Broad Flat Areas Of The Panel And Avoid Stepping On The Panel Ends And Edges Which Can Be Bent By Careless Handling. If This Damage Is Severe, The Edges Must Be Straightened Prior To Erection Since The Appearance And/Or Weather Tightness Of The Panel Could Be Affected. Dragging One Panel Across Another Can Cut Or Abrade The Coating Causing Unsightly Marks On The Panel Surface.</p> <p>Attempts To Erect Panels During Windy Conditions Should Be Avoided To Prevent Damage And Off Safety Considerations.</p> <p>Leaving Dirt Piled Against The Exterior Wall Panels At The Foundation Will Cause Panel Damage. This Dirt May Be Wet Or At Least Contain Some Moisture. Mud May Have Splashed Onto The Wall During Construction. Corrosion Damage May Occur Where This Dirt Or Mud Contacts The Panel, In Areas Where Lime Stabilization Of The Soil Is Required, Corrosion Damage From The Soil's Content Will Be Accelerated And Most Likely Be Severe. All Dirt Must Be Removed From The Panel Walls At The Time Of Completion Of Work. Pre-Pointed Panels May Require Touch-up If The Coating Has Been Damaged During Handling Or Erection.</p> <p>The Appearance Of The Building May Be Affected If Damaged Spots Or Scratches Are Located In Highly Visible Places Such As Around Doors, Windows, Etc. If Damage Is Extensive Then Replacement Of The Entire Panel Should Be Considered.</p>
<p>Types Of Finishes</p> <p>SHOP PRIMED STEEL:</p> <p>All Structural Members Of The Metal Building System Not Fabricated Of Corrosion Resistant Material Or Protected By A Corrosion Resistant Finish Are Painted With One Coat Of Shop Primer Meeting The Performance Requirements Of SSPC Paint Specification No.15. The Coat Of Shop Primer Is Intended To Protect The Steel Framing For Only A Short Period Of Exposure To Ordinary Atmospheric Conditions. Shop Primed Steel Which Is Stored In The Field Pending Erection Should Be Kept Free Of The Ground And So Positioned As To Minimize Water Holding Pockets. Dust, Mud And Other Contaminants Must Be Removed From The Surface Of Damaged To Primed Surfaces And/Or Removal Of Responsibility Due To Improper Field Storage Or Site Conditions Are Not The Manufacturer's Of The Manufacturer. The Manufacturer Is Not Responsible For Deterioration Of The Shop Coat Of Primer Or Corrosion That May Result From Exposure To Atmospheric And Environmental Conditions, Nor The Compatibility Of The Primer To Any Field Applied Coating. Minor Abrasions To The Shop Coat (Including Gouging) Caused By Handling, Loading, Shipping, Unloading And Erection After Painting Or Galvanizing Are Unavoidable. (WMA 2012, Chapter IV 4.2.4).</p> <p>GALVALUME:</p> <p>Galvalume Is The Trade Name For A Patented Steel Sheet And Coil Product Having A Coating Of Corrosion Resistant Aluminum-Zinc Alloy. The Mixture Is Balanced To Obtain The Coating That Retains The Corrosion Resistance And Heat Reflectivity Of Aluminum And Galvanic Protection Of Zinc. The Best Properties Of Both Aluminum And Zinc Are Combined In This Coating And Offer Added Service Life For The Building.</p> <p>Pre-Pointed:</p> <p>Using Galvalume Steel As A Substrate, Pre-Pointed Steel Is Given An Additional Rust Inhibitor Primer Coat. This Primer Coat Further Increases The Corrosion Resistance. These Coatings Are Applied To The Exterior Surface Of The Panels And A Wash Coat Designed Dry For Interior Use, Is Applied On The Opposite Side. Galvalume And Pre-Pointed Steel Can Give Excellent Service For Many Years. If A Few Rules Concerning Their Care And Maintenance Are Observed. All Of These Finishes Are Equally Subject To Damage And Corrosion When Care Is Not Provided.</p> <p>PAINT AND COATING MAINTENANCE:</p> <p>Remove Sprudge Marks From Shop Galvalume: Formula 409 Has Proven To Be Somewhat Effective. Lightly Rub With A Clean Cloth And Rinse With Water. Do Not Rub More Than Required To Remove Sprudge Marks. No Product Will Remove All Sprudge Marks. Remove Rust Stains: Soft Scrub Without Bleach Has Proven To Be Somewhat Effective. Rub With A Soft Cloth And Rinse With Water. Do Not Rub More Than Required To Remove Stain. No Product Will Completely Remove Rust Stains. To Touch-Up Scratches In Paint (Not Bare Metal): Clean Area To Be Painted With Mild Detergent. Rinse Thoroughly And Dry. Using A Small Artists' Brush, Lightly Apply A Minimal Amount Of Color Matched Touch-Up Paint Required To Fill/Cover The Scratch. Contact The Building Manufacturer For Assistance With Ordering/Purchasing Touch-Up Paint As Needed.</p>	<p>Damage From Condensation Or Trapped Water</p> <p>It Is Extremely Important That The Panels Be Monitored For Evidence Or Trapped Water Or Moisture Condensation While Awaiting Erection. High Humidity Conditions With Temperature Cycling Will Cause Condensation Between Panels Within The Bundles. Condensation Can Occur Frequently Near The Seal Coats Or Other Large Bodies Of Water.</p> <p>If jobsite Covers Are Used, They Should Be Tied Away From The Bundle At Corners To Allow Air Circulation Around The Bundle. This Will Help Prevent Moisture Evaporating From The Ground Or Building Floor From Condensing On The Panels. Plastic Or Other Impermeable Covers Are Not Recommended. Immediate Action Is Required If The Panels Are Found To Be Wet From Any Cause. The Bundles Must Be Opened And Each Panel Un-Stacked And Thoroughly Dried On Both Sides. Re-Stacking The Panel At A Slight Angle To Each Other To Prevent Nesting Will Allow Air Circulation And Assist In Keeping The Panel Dry. In Severe Conditions Large Fans Can Be Used To Circulate Air Between Un-Stacked Panels And Accelerate Drying. Damage To The panel Coating Occurs When Panels Become Wet And Are Allowed To stay wet. damage Can Occur To Nested Panels Within 24 to 48 Hours. This Damage Shows Corrosion And Discoloration Of The Panel Surface And Is Commonly Called Wet Storage, Stain, Zinc Oxidation, Or "white Rust".</p>  <p>A Softening Of The Paint Film Can Occur With Pre-Pointed Steel Under Wet Storage Conditions And The Durability Of The Panel Finish Substantially Decrease. Bare Galvalanized And Galvalume Panels React More Quickly To Surface Oxidation Than They Look. The Additional Protection Of Paint, Zinc Coated Or Galvalume Panels Under Normal Exposure Form A Zinc Aluminum Oxide Film On Their Surface Allowing A Slow Oxidation Process Called "Weathering" To Occur That Inhibits Further Corrosion. Nested Bundles Constant Contact Of The Panels With Condensed Or Trapped Water Prevents This Weathering Process.</p> <p>Rapid Oxidation Of The Zinc Or Zinc Aluminum Coating Can Now Occur And May Lead To "Red Rust" In A Short Time. If Discoloration Or Stains Are Minor A Household Cleaner Of The Type Used On Porcelain Sinks And Bathtubs May Be Used To Remove Stains. Bleaching Or Abrasive Materials Should Be Avoided Since Scratching Or Removal Of The Coating Could Occur. Panel With Significant Damage Should Be Replaced By The Buyer Prior To Erection.</p>	<p>Safety Commitment</p> <p>The Builder/Contractor Is Responsible For Applying And Observing All Pertinent Safety Rules And OSHA Standards As Applicable.</p> <p>The Building Manufacturer Has A Commitment To Manufacture Quality Building Components That Can Be Safely Erected. However The Safety Commitment And Job Site Practices Of The Erector Are Beyond The Control Of The Building Manufacturer.</p> <p>It Is Strongly Recommended That Safe Working Conditions And Accident Prevention Practices Be The Top Priority Of Any Job Site.</p> <p>Local, State And Federal Safety And Health Standards, Whether Standard Statutory Or Customary, Should Always Be Followed To Help Ensure Worker Safety.</p> <p>Make Sure All Employees Know The Safest And Most Productive Way Of Erecting A Building. Emergency Procedures Should Be Known To All Employees. Daily Meetings Highlighting Safety Procedures Are Also Recommended. The Use Of Hard Hats, Rubber Sole Shoes For Roof Work, Proper Equipment For Handling Materials And Safety Nets Where Applicable Are Recommended.</p> <p>For The Purposes Of Determining Lift Requirements, No Bundle Supplied By The Manufacturer Will Exceed 4,000 Pounds. For Further Information Also reference The Bill Of Materials For Individual Member Weights Of Structural Members. If Additional Information Is Required Contact The Field Service Department.</p> <p>ICE AND SNOW REMOVAL:</p> <p>Excessive Ice And Snow Removal Should Be Removed From The Roof Immediately To Prevent Damage To Roof And Possible Collapse. Do Not Use Metal Tools To remove The Ice Or Snow As This Can Damage The Paint And/Or Galvalume Coatings. Also Be Careful Around Pipes And Flashings.</p> <p>Be Extremely Careful If Your Roof Has Light Transmitting Panels. These Panels Will Not Support A Person's Weight And Will Be Difficult Or Impossible To See If They Are Covered With Ice Or Snow. See WMA Low-Rise Building Systems Manual, Appendix A8 For Details On Snow Removal Procedures. These Procedures Should Commence When Half Of The Design Roof Snow Load Is Realized.</p> <p>DEBRIS REMOVAL:</p> <p>Any foreign debris Such As Sawdust/Dirt, Leaves, Animal Droppings, Etc. Will Cause Corrosion Of The Roof, Gutters, Trim, Etc. If Left On The Building Surface For A Long Enough Time. The Roof Should Be Periodically Inspected For Such Conditions And If Found, They Should Be Removed In A Manner Consistent With These Roof Maintenance Procedures. Never Allow Treated Lumber Or Concrete/Mortar/Grout To Come In Contact With Roof Panels, Especially Galvalume For Extended Periods Of Time.</p> <p>PERIODIC INSPECTION:</p> <p>All High-Strength Steel Be Periodically Be Inspected For Tightness. Particularly In Crane Buildings And After Seismic Or Wind Activity. The Crane Manufacturer Will Specify A Minimum Period But It Should Not Exceed Two Years.</p> <p>DRAINAGE:</p> <ol style="list-style-type: none"> Keep Roof Free Of Debris And Keep Debris Out Of Gutter To Allow Water Quickly Drain From The Roof. Do Not Use Wood Blocking To Hold Equipment Off The Panel Seams. This Blocks The Flow Of Water And Hold Moisture. Do Not Allow Rooftop AC Units Or Evaporative Coolers To Drain Onto The Roof. Anything That Traps Or Holds Moisture On A Roof Will Cause Premature Corrosion. 	<p>Roof Maintenance Guidelines</p> <ol style="list-style-type: none"> Inspect Roof For Damage After Heavy Storms. Inspect And Assess As Necessary All Roof Curbs And Other Penetrations With Urethane Sealant. Always Get Manufacturer Approval Before Making Any Modifications To The Roof. Repeat Any Areas That Are Susceptible To Rust As Required. When Performing Roof Maintenance, Always Take The Following Precautions: <ol style="list-style-type: none"> Use Fall Protection And Other Safety Protection As Required. Do Not Walk On Roof Flashing Such As Gutter, Rake, Hip Or Ridge Flash. Do Not Walk On Light Transmitting Panels (LTP's). They Will Not Support A Person's Weight. Guard All LTP's And Roof Openings. Step Only In The Panel Flat Directly On Or In Close Proximity To A Supporting Roof Structure. After Other Trades Have Worked on the Roof For Any Reason, Inspect The Roof For Damage Caused By Workers Including Chemical Or Solvent Spills, Scratches In The Paint Or Galvalume Coating, Excessive Foot Traffic And Punctures. Make Sure That All Debris Or Scrap Left Behind By Workers Is Removed From The Roof Immediately. Avoid Using Cutoff Saws And Welding Equipment Over The Roof. The Roof Must Adequately Protected. <p>FOOT TRAFFIC:</p> <p>Keep Foot Traffic To A Minimum. Heavy Foot Traffic Can Cause Ponding On Low Pitched Roofs. This Is Particularly True Just Upslope From The Eave And At Ends.</p> <p>Always Walk In The Flat Of The Panel Near A Supporting Roof Structure. Do Not Walk On Light Transmitting Panels. Heavy Foot Traffic May Cause Buck Burnish Marks. On Bare Galvalume Roofs, Excessive Foot Traffic May Cause Buck Burnish Marks. If Regular Foot Traffic Is Planned For A Roof, Provisions Should Be Made For A Properly Designed And Installed Walkway System. In Order To Limit Access To The Roof, Roof Hatches Or Access Ladders Should Be Locked At All Times. A Sign Posted At Each Hatch Or Ladder Should State That Only Authorized Personnel Are Allowed On The Roof. In Addition A Log Book Should Be Kept Of All Visits To The Roof And The Reason For Such Visits.</p> <p>DISSIMILAR METALS:</p> <p>Never Allow Your Roof To Come In Contact With, Or Water Runoff From Any Dissimilar Metal Including, But Not Limited To: Copper, Lead Or Graphite. This Includes Copper And Arsenic Salts Used In Treated Lumber, Calcium Used In Concrete, Rubber And Grout.</p>	<p>Roof Maintenance Guidelines</p> <ol style="list-style-type: none"> Inspect Roof For Damage After Heavy Storms. Inspect And Assess As Necessary All Roof Curbs And Other Penetrations With Urethane Sealant. Always Get Manufacturer Approval Before Making Any Modifications To The Roof. Repeat Any Areas That Are Susceptible To Rust As Required. When Performing Roof Maintenance, Always Take The Following Precautions: <ol style="list-style-type: none"> Use Fall Protection And Other Safety Protection As Required. Do Not Walk On Roof Flashing Such As Gutter, Rake, Hip Or Ridge Flash. Do Not Walk On Light Transmitting Panels (LTP's). They Will Not Support A Person's Weight. Guard All LTP's And Roof Openings. Step Only In The Panel Flat Directly On Or In Close Proximity To A Supporting Roof Structure. After Other Trades Have Worked on the Roof For Any Reason, Inspect The Roof For Damage Caused By Workers Including Chemical Or Solvent Spills, Scratches In The Paint Or Galvalume Coating, Excessive Foot Traffic And Punctures. Make Sure That All Debris Or Scrap Left Behind By Workers Is Removed From The Roof Immediately. Avoid Using Cutoff Saws And Welding Equipment Over The Roof. The Roof Must Adequately Protected. <p>FOOT TRAFFIC:</p> <p>Keep Foot Traffic To A Minimum. Heavy Foot Traffic Can Cause Ponding On Low Pitched Roofs. This Is Particularly True Just Upslope From the Eave and at Ends.</p> <p>Always Walk in the Flat of the Panel Near a Supporting Roof Structure. Do Not Walk on Light Transmitting Panels. Heavy Foot Traffic May Cause Buck Burnish Marks. On Bare Galvalume Roofs, Excessive Foot Traffic May Cause Buck Burnish Marks. If Regular Foot Traffic is Planned for a Roof, Provisions should be made for a properly designed and installed walkway system. In order to limit access to the roof, roof hatches or access ladders should be locked at all times. A sign posted at each hatch or ladder should state that only authorized personnel are allowed on the roof. In addition a log book should be kept of all visits to the roof and the reason for such visits.</p> <p>DISSIMILAR METALS:</p> <p>Never allow your roof to come in contact with, or water runoff from any dissimilar metal including, but not limited to: copper, lead or graphite. This includes copper and arsenic salts used in treated lumber, calcium used in concrete, rubber and grout.</p>
<p>Erection Guide</p>		<p>PERIODIC INSPECTION:</p> <p>All High-Strength Steel Be Periodically Be Inspected For Tightness. Particularly In Crane Buildings And After Seismic Or Wind Activity. The Crane Manufacturer Will Specify A Minimum Period But It Should Not Exceed Two Years.</p> <p>DRAINAGE:</p> <ol style="list-style-type: none"> Keep Roof Free Of Debris And Keep Debris Out Of Gutter To Allow Water Quickly Drain From The Roof. Do Not Use Wood Blocking To Hold Equipment Off The Panel Seams. This Blocks The Flow Of Water And Hold Moisture. Do Not Allow Rooftop AC Units Or Evaporative Coolers To Drain Onto The Roof. Anything That Traps Or Holds Moisture On A Roof Will Cause Premature Corrosion. 	<p>Roof Maintenance Guidelines</p> <ol style="list-style-type: none"> Inspect Roof For Damage After Heavy Storms. Inspect And Assess As Necessary All Roof Curbs And Other Penetrations With Urethane Sealant. Always Get Manufacturer Approval Before Making Any Modifications To The Roof. Repeat Any Areas That Are Susceptible To Rust As Required. When Performing Roof Maintenance, Always Take The Following Precautions: <ol style="list-style-type: none"> Use Fall Protection And Other Safety Protection As Required. Do Not Walk On Roof Flashing Such As Gutter, Rake, Hip Or Ridge Flash. Do Not Walk On Light Transmitting Panels (LTP's). They Will Not Support A Person's Weight. Guard All LTP's And Roof Openings. Step Only In The Panel Flat Directly On Or In Close Proximity To A Supporting Roof Structure. After Other Trades Have Worked on the Roof For Any Reason, Inspect The Roof For Damage Caused By Workers Including Chemical Or Solvent Spills, Scratches In The Paint Or Galvalume Coating, Excessive Foot Traffic And Punctures. Make Sure That All Debris Or Scrap Left Behind By Workers Is Removed From The Roof Immediately. Avoid Using Cutoff Saws And Welding Equipment Over The Roof. The Roof Must Adequately Protected. <p>FOOT TRAFFIC:</p> <p>Keep Foot Traffic To A Minimum. Heavy Foot Traffic Can Cause Ponding On Low Pitched Roofs. This Is Particularly True Just Upslope From the Eave and at Ends.</p> <p>Always Walk in the Flat of the Panel Near a Supporting Roof Structure. Do Not Walk on Light Transmitting Panels. Heavy Foot Traffic May Cause Buck Burnish Marks. On Bare Galvalume Roofs, Excessive Foot Traffic May Cause Buck Burnish Marks. If Regular Foot Traffic is Planned for a Roof, Provisions should be made for a properly designed and installed walkway system. In order to limit access to the roof, roof hatches or access ladders should be locked at all times. A sign posted at each hatch or ladder should state that only authorized personnel are allowed on the roof. In addition a log book should be kept of all visits to the roof and the reason for such visits.</p> <p>DISSIMILAR METALS:</p> <p>Never allow your roof to come in contact with, or water runoff from any dissimilar metal including, but not limited to: copper, lead or graphite. This includes copper and arsenic salts used in treated lumber, calcium used in concrete, rubber and grout.</p>	<p>Roof Maintenance Guidelines</p> <ol style="list-style-type: none"> Inspect Roof For Damage After Heavy Storms. Inspect And Assess As Necessary All Roof Curbs And Other Penetrations With Urethane Sealant. Always Get Manufacturer Approval Before Making Any Modifications To The Roof. Repeat Any Areas That Are Susceptible To Rust As Required. When Performing Roof Maintenance, Always Take The Following Precautions: <ol style="list-style-type: none"> Use Fall Protection And Other Safety Protection As Required. Do Not Walk On Roof Flashing Such As Gutter, Rake, Hip Or Ridge Flash. Do Not Walk On Light Transmitting Panels (LTP's). They Will Not Support A Person's Weight. Guard All LTP's And Roof Openings. Step Only In The Panel Flat Directly On Or In Close Proximity To A Supporting Roof Structure. After Other Trades Have Worked on the Roof For Any Reason, Inspect The Roof For Damage Caused By Workers Including Chemical Or Solvent Spills, Scratches In The Paint Or Galvalume Coating, Excessive Foot Traffic And Punctures. Make Sure That All Debris Or Scrap Left Behind By Workers Is Removed From The Roof Immediately. Avoid Using Cutoff Saws And Welding Equipment Over The Roof. The Roof Must Adequately Protected. <p>FOOT TRAFFIC:</p> <p>Keep Foot Traffic To A Minimum. Heavy Foot Traffic Can Cause Ponding On Low Pitched Roofs. This Is Particularly True Just Upslope From the Eave and at Ends.</p> <p>Always Walk in the Flat of the Panel Near a Supporting Roof Structure. Do Not Walk on Light Transmitting Panels. Heavy Foot Traffic May Cause Buck Burnish Marks. On Bare Galvalume Roofs, Excessive Foot Traffic May Cause Buck Burnish Marks. If Regular Foot Traffic is Planned for a Roof, Provisions should be made for a properly designed and installed walkway system. In order to limit access to the roof, roof hatches or access ladders should be locked at all times. A sign posted at each hatch or ladder should state that only authorized personnel are allowed on the roof. In addition a log book should be kept of all visits to the roof and the reason for such visits.</p> <p>DISSIMILAR METALS:</p> <p>Never allow your roof to come in contact with, or water runoff from any dissimilar metal including, but not limited to: copper, lead or graphite. This includes copper and arsenic salts used in treated lumber, calcium used in concrete, rubber and grout.</p>
<p>DESCRIPTION: DETAIL DRAWINGS</p>				
<p>CUSTOMER:</p>		<p>PROJECT: 20x30x9</p>		
<p>LOCATION: Brampton, ON. L6S 1W8</p>		<p>DRN. BY: KN CT'D BY: PK DATE: SCALE: N.T.S. REV. 01 QUOTATION NO. 24-4763 SHEET NO. OF</p>		
<p>15 Aug 2024</p>				
<p>DRAWING STATUS:</p> <p><input type="checkbox"/> FOR CONSTRUCTION <input type="checkbox"/> FINAL DRAWINGS USE FOR ERECTION PURPOSES <input type="checkbox"/> FOR APPROVAL / PERMIT <input type="checkbox"/> NOT TO BE USED FOR ERECTION PURPOSES <input type="checkbox"/> PRELIMINARY ONLY <input type="checkbox"/> ISSUED FOR CONFIRMATION OF SCOPE ONLY</p>				